

(19)



(11)

EP 3 760 361 B1

(12)

EUROPEAN PATENT SPECIFICATION

(45) Date of publication and mention of the grant of the patent:

09.03.2022 Bulletin 2022/10

(21) Application number: **19848919.7**

(22) Date of filing: **28.06.2019**

(51) International Patent Classification (IPC):
B23K 11/31 (2006.01)

(52) Cooperative Patent Classification (CPC):
B23K 11/317; B23K 11/318

(86) International application number:
PCT/JP2019/025844

(87) International publication number:
WO 2020/225927 (12.11.2020 Gazette 2020/46)

(54) **ONE-SIDE HEATING DEVICE**

EINSEITIGE HEIZVORRICHTUNG

DISPOSITIF DE CHAUFFAGE UNILATÉRAL

(84) Designated Contracting States:
AL AT BE BG CH CY CZ DE DK EE ES FI FR GB GR HR HU IE IS IT LI LT LU LV MC MK MT NL NO PL PT RO RS SE SI SK SM TR

(30) Priority: **07.05.2019 JP 2019087258**

(43) Date of publication of application:
06.01.2021 Bulletin 2021/01

(73) Proprietor: **DENGENSHA TOA CO., LTD.**
Tama-ku
Kawasaki-shi
Kanagawa 214-8588 (JP)

(72) Inventors:
• **IWAMOTO, Yoshiaki**
Kawasaki-shi
Kanagawa 2148588 (JP)

• **SAEKI, Shuhei**
Kawasaki-shi
Kanagawa 2148588 (JP)

(74) Representative: **Reichert & Lindner**
Partnerschaft Patentanwälte
Stromerstr. 2A
93049 Regensburg (DE)

(56) References cited:
WO-A1-03/085787 **WO-A1-2018/220892**
DE-A1- 2 141 177 **DE-A1- 2 905 784**
JP-A- 2003 080 371 **JP-A- 2010 105 008**
JP-U- H0 518 772 **US-A- 4 933 531**
US-A1- 2015 122 782

EP 3 760 361 B1

Note: Within nine months of the publication of the mention of the grant of the European patent in the European Patent Bulletin, any person may give notice to the European Patent Office of opposition to that patent, in accordance with the Implementing Regulations. Notice of opposition shall not be deemed to have been filed until the opposition fee has been paid. (Art. 99(1) European Patent Convention).

Description**TECHNICAL FIELD**

[0001] The present invention relates to a single side heating apparatus.

BACKGROUND ART

[0002] A conventional welding apparatus, as an example, is disclosed in JP-S62-158577A, which discloses that a gun attachment block having a lower end, to which electrodes are attached, is caused to slide on an arc along an arch-shaped guide rail. The position to which the gun attachment block slides is controlled by driving a motor.

[0003] US 2015/0122782 A1 discloses a single side heating apparatus comprising a linkage mechanism supporting a pair of electrodes and forms the basis for the preamble of claim 1.

[0004] DE 21 41 177 A1 discloses a single side heating apparatus comprising a cam mechanism supporting a pair of electrodes and forms the basis for the preamble of claim 3.

SUMMARY OF THE INVENTION**TECHNICAL PROBLEM**

[0005] A single side heating apparatus equipped with a pair of electrodes for heating a workpiece from one side of the workpiece is known; each of the electrodes may include a linear contact portion, through which the electrode makes a line contact with the workpiece. When the electrode of this type comes into contact with the workpiece such that the linear contact portion obliquely contacts with the surface of the workpiece, the electrode makes a point contact with the workpiece, which disadvantageously leads to heating failure. The technique disclosed in JP-S62-158577 A is to control the position of the electrodes by controlling the motor, and it is thus difficult for this technique to make the line contact portion of the electrode line contact with the workpiece in an accurate manner.

[0006] There is also known a structure for making a line contact portion in line contact with a surface of a workpiece, in which structure an electrode is rotated by passively swinging the attachment portion for the electrode in accordance with a reaction force received by the electrode from the workpiece. However, in this conventional structure, the center of swinging motion, that is the center of rotation of the electrode, is spaced apart upward from the electrode, so that the line contact portion swings or rotatively displaces to a large extent in a direction in which the line contact portion extends. If the rotative displacement in the extension direction is large, one end of the line contact portion may get stuck on the workpiece without smoothly sliding on the surface of the workpiece,

so that the electrode remains point-contacting with the workpiece.

[0007] To solve the problem as described above, the present invention seeks to provide a single side heating apparatus which can make a contact portion of an electrode properly contact with the workpiece.

SOLUTION TO PROBLEM

[0008] To solve the above problem, the present invention seeks to provide a single side heating apparatus according to claim 1, which apparatus is equipped with a pair of electrodes for heating a workpiece from one side of the workpiece, the apparatus comprising: a base portion; the pair of electrodes each having a contact portion configured to contact with the workpiece in one direction continuously or at a plurality of spaced-apart portions thereof; an electrode holder, to which the pair of electrodes are fixed; and a four-bar linkage provided between the base portion and the electrode holder and configured to rotate to tilt the electrode holder around an axis orthogonal to the one direction by a reaction force received by the electrodes from the workpiece, wherein the four-bar linkage comprises a first link located closer to the electrode holder, a second link located closer to the base portion, a third link, and a fourth link, the first link being shorter than the second link, and the third link and the fourth link being equal in length. In an alternative solution the invention provides a single side heating apparatus according to claim 3.

[0009] According to the present invention, the following operation and advantageous effects can be achieved.

[0010] If a contact portion is oriented obliquely with respect to the surface of the workpiece and one end of the contact portion makes a point contact with the workpiece, the center of rotation of the electrode is located proximate to the contact portion, so that the one end of the contact portion displaces in the upper-lower direction only, that is substantially the same as the pressing direction. This makes it possible to make the contact portion properly contact with the workpiece without the one end of the contact portion getting stuck on the surface of the workpiece.

ADVANTAGEOUS EFFECTS OF THE INVENTION

[0011] According to the present invention, it is possible to make a contact portion of an electrode properly contact with a workpiece.

BRIEF DESCRIPTION OF THE DRAWINGS**[0012]**

FIG. 1A is a perspective view of an exterior of an electrode having a contact portion that extends continuously in one direction.

FIG. 1B is a perspective view of an exterior of an

electrode having a comb-shaped contact portion.

FIG. 2A is a plan view showing a state in which a pair of electrodes such as shown in FIG. 1A are brought into contact with a surface of a workpiece for heating.

FIG. 2B is a plan view showing a state in which a pair of electrodes such as shown in FIG. 1B are brought into contact with a surface of a workpiece for heating.

FIG. 3A is a side sectional view showing a state in which two workpieces, each made of an electric conductor, are placed one on top of another, and a pair of electrodes are brought into contact with a surface of one workpiece for heating.

FIG. 3B is a side sectional view showing a state in which a workpiece made of an electric conductor is placed on a workpiece made of an electrical insulator, and a pair of electrodes are brought into contact with a surface of the conductive workpiece for heating.

FIG. 3C is a side sectional view showing a state in which a workpiece made of an electric conductor is placed on a workpiece made of an electric conductor or an electrical insulator with an adhesive layer interposed therebetween, and a pair of electrodes are brought into contact with a surface of the conductive workpiece for heating.

FIG. 4 is a front view of a single side heating apparatus according to the first embodiment.

FIG. 5 is a sectional view taken along the line V-V of FIG. 4.

FIG. 6 is a perspective view of an exterior of the single side heating apparatus according to the first embodiment.

FIG. 7 is a view explaining the operation of a four-bar linkage according to the first embodiment.

FIG. 8 is a view explaining the operation of a tilting mechanism for a conventional electrode.

FIG. 9 is a side view of a single side heating apparatus according to the second embodiment.

FIG. 10 is a front view of the single side heating apparatus according to the second embodiment.

FIG. 11 is a sectional view taken along the line XI-XI of FIG. 9.

FIG. 12 is a sectional view taken along the line XII-XII of FIG. 10.

FIG. 13 is a perspective view of an exterior of the single side heating apparatus according to the second embodiment.

FIG. 14 is a view explaining the operation of a cam mechanism according to the second embodiment.

DESCRIPTION OF EMBODIMENTS

[0013] Two embodiments of a single side heating apparatus according to the present invention will be described below. In the following description, an upper-lower direction refers to the direction in a state in which a

base portion is located at an upper side and electrodes are located at a lower side.

[0014] First, a shape of electrodes and a principle of joining workpieces will be described. A single side heating apparatus according to the present invention includes a pair of electrodes for heating a workpiece from one side of the workpiece. The pair of electrodes have the same shape. FIG. 1 shows two examples of an electrode, each of which has a contact portion in a different shape. An electrode 2A shown in FIG. 1A has a rectangular flat-plate shape. The electrode 2A has a lower end portion on which an inclined surface 20 inclined in the thickness direction of the electrode 2A is formed, and the lowermost end of the inclined surface 20 forms a contact portion 4 to be in contact with a workpiece. The contact portion 4 is formed to extend continuously in one direction to provide a single continuous contact surface. Meanwhile, the electrode 2A₁ shown in FIG. 1B has a contact portion 4 in the shape of a comb. In other words, the contact portion 4 has a plurality of spaced-apart portions extending in one direction with a gap interposed between two adjacent spaced-apart portions, so that a plurality of spaced-apart contact surfaces are provided.

[0015] FIG. 2 includes plan views showing a state in which a plate-like workpiece W1 is placed on top of a plate-like workpiece W2, and a pair of electrodes are brought into contact with the surface of the workpiece W1 for heating, in which FIG. 2A shows an example of using the electrode 2A shown in FIG. 1A, and FIG. 2B shows an example of using the comb-shaped electrode 2A₁ shown in FIG. 1B. It should be noted that arrows shown between the electrodes indicate a flow of electric current and dotted parts indicate heated portions. In both cases, electricity flows from one electrode (each indicated by 2A, 2A₁) to the other electrode (each indicated by 2B, 2B₁) to heat a portion around the electrodes. In the case of the comb-shaped electrodes 2A₁, 2B₁ of FIG. 2B, since the contact area between the electrodes and the workpiece is smaller as compared with that of FIG. 2A, the electric current density is high and less heat is absorbed by the electrodes. This makes effectively heating the workpiece.

[0016] FIG. 3 includes side sectional views showing a state in which the workpiece W1 is placed on top of the workpiece W2, and the pair of electrodes 2A, 2B are brought into contact with the surface of the workpiece W1, in which FIG. 3A shows the workpieces W1, W2 each made of an electric conductor, FIG. 3B shows the workpiece W1 made of an electric conductor and the workpiece W2 made of an electrical insulator, and FIG. 3C shows an adhesive layer W3, such as adhesive film and thermosetting resin-based adhesive, interposed between the workpiece W1 and the workpiece W2. It should be noted that in FIG. 3, arrows shown between the electrodes indicate a flow of electric current, dotted parts indicate heated portions, and hatched parts each provided between the workpieces W1, W2 indicate joint portions.

[0017] The single side heating apparatus according to

the present invention is an apparatus for joining together the workpiece W1 made of an electric conductor and the workpiece W2 made of either an electric conductor or an electrical insulator; the single side heating apparatus is configured to press the electrodes 2A, 2B against the workpiece W1, and either to cause electricity to flow from the electrode 2A to the electrode 2B through the workpiece W1 and the workpiece W2 as shown in FIG. 3A, or to cause electricity to flow from the electrode 2A to the electrode 2B through the workpiece W1 as shown in FIG. 3B, thereby generating Joule heat. Accordingly, as seen in FIG. 3A, the single side heating apparatus 1 directly joins the workpiece W1 and the workpiece W2 together. Alternatively, as seen in FIG. 3B, the single side heating apparatus 1 joins the workpiece W1 and the workpiece W2 together by heating the workpiece W1 and thus fusing the surface of the workpiece W2. As a further alternative, as seen in FIG. 3C, the single side heating apparatus 1 is capable of joining the workpiece W1 and the workpiece W2 through an adhesive layer W3 interposed between the workpieces W1, W2. Similarly, the single side heating apparatus 1 is capable of reducing a curing time of the adhesive upon joining the workpiece W1 and the workpiece W2 through thermosetting resin-based adhesive applied as an adhesive layer W3.

[0018] The above-described operations can also be applied in the case of using the electrodes 2A₁, 2B₁.

[0019] A description will be given to the case of using the electrodes 2A, 2B; however, the present invention is applicable to the case of using the electrodes 2A₁, 2B₁.

<FIRST EMBODIMENT>

[0020] With reference to FIGS. 4 to 7, a first embodiment will be described. The single side heating apparatus 1 includes a base portion 3, a pair of electrodes 2A, 2B each having a contact portion 4 configured to contact with a workpiece W1 (see FIG. 7) continuously and linearly in one direction, electrode holders 5 to which the pair of electrodes 2A, 2B are fixed, and four-bar linkages 7.

<Base portion 3>

[0021] The base portion 3 includes a base plate 11, a cylinder 12, and rod holders 13. The base plate 11 is a flat-plate-like member configured to be bolted to a driving member such as a robot arm with bolts (not shown). The cylinder 12 is bolted to the base plate 11 with bolts 14 and includes a cylinder case 15 in which a pair of front and rear cylinder chambers are formed, a cylinder cover 16 attached to a lower portion of the cylinder case 15, and a pair of front and rear piston rods 17 each disposed in the corresponding cylinder chamber and each having a lower end protruding downward from the cylinder cover 16. The two cylinder chambers are in communication with each other through a communicating space 18 provided above the cylinder chambers. The communicating space

18 is filled with grease.

[0022] Rod holders 13 have a flattened rectangular prism shape and are bolted to lower ends of the piston rods 17 with bolts 19. Two piston rods 17 are configured to move upward and downward to absorb a vertical position difference caused between the electrode 2A and the electrode 2B when the electrodes 2A, 2B contact with the workpiece W1.

10 <Electrodes 2A, 2B and Electrode holders 5>

[0023] As seen in FIG. 1A, the electrodes 2A, 2B have a rectangular flat-plate shape, and the contact portion 4 is formed at the lowermost end of each of the inclined surfaces 20. Returning to FIGS. 4 to 7, the electrode holders 5 are substantially flat-plate-like members each of which is plane-parallel to the base plate 11; the electrode holders 5 are provided in pair such that one is disposed at the front side while the other one is disposed at the rear side. An electrode mounting seat 5A is provided at the lower surface of each electrode holder 5 to protrude downward. The electrode 2A and the electrode 2B are disposed opposite to each other such that the contact portions 4 thereof are disposed closely to each other; the electrodes 2A, 2B are bolted to the electrode mounting seats 5A with bolts 21. A pair of right and left anti-rotation members 37 are provided between the two electrode holders 5. Providing the anti-rotation members 37 can prevent the piston rods 17 from rotating around a vertical axis; in other words, the rotation of the electrodes 2A, 2B around the vertical axis can be prevented.

<Four-bar linkages 7>

[0024] A four-bar linkage 7 is provided between the base portion 3 and an electrode holder 5. The four-bar linkage 7 is configured to rotate to tilt the electrode holder 5 around an axis O1 orthogonal to a longitudinal direction in which the contact portion 4 extends (extension direction of the contact portion 4) by a reaction force received by the electrode 2A, 2B from the workpiece W1. The four-bar linkage 7 includes a first link base 22 provided on the base portion 3 side (i.e., provided closer to the base portion 3), a second link base 23 provided on the electrode holder 5 side (i.e., provided closer to the electrode holder 5), and a pair of links 24A, 24B.

[0025] The first link base 22 having a rectangular prism shape is bolted to the lower surface of the rod holder 13 with bolts 26 with an insulating plate 25 interposed therebetween. A link receiving chamber 27 is formed in the first link base 22; the link receiving chamber 27 opens at the lower end thereof. The second link base 23 having a rectangular prism shape is provided on the upper surface of the electrode holder 5. In this embodiment, the second link base 23 is integral with the electrode holder 5; however, the second link base 23 may be formed as a separate member. A link receiving chamber 28 is formed in the second link base 23 opposite to the link receiving

chamber 27 of the first link base 22; the link receiving chamber 28 opens at an upper portion and right and left portions thereof.

[0026] The first link base 22 is provided with a pair of right and left link shafts 29, 30; the link shafts 29, 30 extend through the link receiving chamber 27 in the front-rear direction. The second link base 23 is provided with a pair of right and left link shafts 31, 32; the link shafts 31, 32 extend through the link receiving chamber 28 in the front-rear direction. One link 24A is pivotably supported by the link shaft 29 and the link shaft 31, while the other link 24B is pivotably supported by the link shaft 30 and the link shaft 32. In this embodiment, as seen in FIG. 4, the electrodes 2A, 2B are rotatable within the rotatable angle θ of approximately $\pm 2.5^\circ$.

[0027] Therefore, as seen in FIG. 7, the four-bar linkage 7 includes four links consisting of a first link 33 between the link shafts 31, 32 that is located closer to the electrode holder 5, a second link 34 between the link shafts 29, 30 that is located closer to the base portion 3, a third link 35 between the link shafts 29, 31, and a fourth link 36 between the link shafts 30, 32. The four-bar linkage 7 is formed to have a relationship in which the first link 33 is shorter than the second link 34 and the third link 35 and the fourth link 36 are equal in length. The axis O1 that is the center of tilting movement of the electrode 2A, 2B is located approximately at the center of the contact portion 4.

<Urging means 8>

[0028] As seen in FIG. 4, the single side heating apparatus 1 includes an urging means 8 configured to urge an electrode holder 5 toward a standby position. The standby position is a position at which the electrode holder 5 is positioned while the contact portion 4 is not subject to a reaction force, or the position at which the contact portion 4 is oriented to extend in the right-left direction. The urging means 8 is formed of a pair of right and left plate springs 38A, 38B. The plate springs 38A, 38B are fixed to the first link base 22 by fastening the upper ends of the plate springs 38A, 38B to right and left surfaces of the first link base 22 with bolts 39. The lower ends of the plate springs 38A, 38B are free ends to hold the right and left surfaces of a second link base 23 and to urge the electrode holder 5 toward the standby position.

<Operation>

[0029] FIG. 7 is a view of a four-bar linkage 7 according to this embodiment, explaining the operation of an electrode 2A, 2B when it is brought into contact with the surface of the workpiece W1. FIG. 8 is a view explaining the operation of the conventional structure, as a comparative example, in which the center of rotation p of an electrode 2A, 2B is spaced apart upward. In FIG. 8, when the contact portion 4 is oriented obliquely with respect to the surface of the workpiece W1 and the right end 70 of the

contact portion 4 makes a point contact with the workpiece W1, the electrode 2A, 2B tends to tilt counterclockwise in the figure, by a reaction force from the workpiece W1, from a position shown in phantom lines to a position shown in solid lines. However, since the center of rotation p is spaced apart upward from the contact portion 4, it is necessary that the contact portion 4 move in the X-axis direction by a large displacement amount X1 to cause the contact portion 4 to make a line contact with the workpiece W1. According to this conventional structure, the right end 70 may get stuck while the contact portion 4 is sliding on the surface of the workpiece W1, so that the left end of the contact portion 4 may remain non-contacting with the surface of the workpiece W1.

[0030] In contrast, according to the four-bar linkage 7 of FIG. 7, if the right end 70 receives a reaction force from the workpiece W1, the four-bar linkage 7 moves from a position shown in phantom lines to a position shown in solid lines against the urging force of the plate spring 38A (see FIG. 4). At this time, the link shaft 31 rotates around the link shaft 29 that serves as a center of rotation to move in a leftward and downward direction, while the link shaft 32 rotates around the link shaft 30 that serves as a center of rotation to move in a leftward and upward direction. Accordingly, the first link 33 displaces leftward as a whole, while the link shaft 31 is located lower than the link shaft 32, that is, inclined so that the lower side of the first link 33 faces to the right. When the first link 33 is inclined such that the lower side thereof faces to the right, the contact portion 4 disposed below and parallel to the first link 33 tends to displace rightward. However, since the first link 33 as a whole displaces to the left and the contact portion 4 also displaces to the left, the rightward displacement and the leftward displacement are canceled each other at the contact portion 4. Therefore, the right end 70 slightly displaces in the Y-axis direction (upper-lower direction), but does not substantially displace in the X-axis direction. Since the Y-axis direction is the same as a direction in which the electrodes 2A, 2B are pressed against the workpiece W1, the contact portion 4 smoothly makes a linear contact with the workpiece W1 without the right end 70 getting stuck on the surface of the workpiece W1.

[0031] When the electrode 2A, 2B is moved away from the workpiece W1 after a predetermined heating, the four-bar linkage 7 (FIG. 4) is operated by the urging force of the plate springs 38A, 38B, and the electrode holder 5 returns to the standby position.

[0032] As described above, the single side heating apparatus 1 according to the first embodiment includes the base portion 3, the pair of electrodes 2A, 2B each having the contact portion 4, the electrode holders 5, four-bar linkages 7 each provided between the base portion 3 and the electrode holder 5 and configured to rotate to tilt the electrode holder 5 around the axis O1 orthogonal to the direction in which the contact portion 4 extends, by a reaction force received by the electrode 2A, 2B from the workpiece W1. Further, each of the four-bar linkages 7

is configured such that the first link 33 located closer to the electrode holder 5 is shorter than the second link 34 located closer to the base portion 3 and the third link 35 and the fourth link 36 are equal in length.

[0033] According to the first embodiment, when one end of the contact portion 4 makes a point contact with the workpiece W1, the center of tilting movement of the electrode 2A, 2B is located proximate to the center of the contact portion 4, so that the one end of the contact portion 4 displaces substantially in the upper-lower direction only. Therefore, the contact portion 4 properly makes a linear contact with the workpiece W1 without the one end of the contact portion 4 getting stuck on the surface of the workpiece W1.

[0034] Further, use of the four-bar linkages 7 can provide a structure that is excellent in assembly with reduced number of parts.

[0035] Thanks to the urging means 8 configured to urge the electrode holder 5 toward the standby position, the electrodes 2A, 2B are caused to return to the original neutral position with ease. Further, it is possible to keep the electrode 2A, 2B stably in contact with the workpiece W1.

<SECOND EMBODIMENT>

[0036] With reference to FIGS. 9 to 14, a second embodiment will be described.

[0037] The single side heating apparatus 1 according to the second embodiment includes a base portion 3, a pair of electrodes 2A, 2B each having a contact portion 4, a pair of electrode holders 5 to which the pair of electrodes 2A, 2B are fixed, and cam mechanisms 9.

<Base portion 3>

[0038] Since the configuration of the base portion 3 is the same as that of the first embodiment, the same reference numeral is used for the base portion and the description thereof will be omitted.

<Electrodes 2A, 2B and Electrode holders 5>

[0039] Since the configuration of the electrodes 2A, 2B is the same as that of the first embodiment, the same reference numerals are used for the electrodes and the description thereof will be omitted. Further, since the configuration of the electrode holder 5 is the same as that of the first embodiment except that the second link base 23 according to the first embodiment is not provided, the same reference numeral is used for the electrode holder and the description thereof will be omitted.

<Cam mechanism 9>

[0040] A cam mechanism 9 is provided between the base portion 3 and an electrode holder 5. The cam mechanism 9 is configured to rotate to tilt the electrode holder

2A, 2B around an axis O2 passing through a center of each of the contact portions 4 and orthogonal to a direction in which the contact portion 4 extends (extension direction of the contact portion 4) by a reaction force received by the electrode 2A, 2B from the workpiece W1. The cam mechanism 9 includes a cam plate 41 having a cam surface 40 formed of an arc-shaped surface extending around the axis O2, and roller followers 42A, 42B configured to come into contact with the cam surface 40.

[0041] Each of the rod holder 13 has a lower surface, to which the cam plate 41 is bolted with bolts 43 with the direction of its thickness aligned with the front-rear direction. The cam plate 41 has a lower surface, at which the cam surface 40 formed of an arc-shaped surface extending around the axis O2 located at a center of the contact portion 4 is formed.

[0042] The electrode holder 5 has an upper surface, to which a knuckle 45 is bolted with bolts 46 with an insulating plate 44 interposed therebetween. The knuckle 45 has a substantially rectangular prism shape and includes a cam receiving chamber 47; the cam receiving chamber 47 opens at an upper portion and right and left portions thereof. The roller followers 42A, 42B are pivotably supported by a pair of right and left cam shafts 48, 49 to rotate around the cam shafts 48, 49. The cam shafts 48, 49 extend through the cam receiving chamber 47 in the front-rear direction at the lower portion of the cam receiving chamber 47. When the cam plate 41 is inserted into the upper portion of the cam receiving chamber 47, the cam surface 40 comes into contact with the roller followers 42A, 42B. The roller followers 42A, 42B are in contact with portions closer to the right end and the left end of the cam surface 40.

[0043] In order to support the weight of the knuckle 45 by the cam plate 41, the cam plate 41 has an arc-shaped long hole 50 formed to extend around the axis O2. Meanwhile, the knuckle 45 is provided with a hinge pin 52; the hinge pin 52 extends in the front-rear direction through a roller bracket 51. A roller follower 53 such as a bearing is pivotably supported by the hinge pin 52 to rotate around the hinge pin 52 so as to be positioned within the long hole 50. The knuckle 45 has a relief hole 54, in which a part of the roller bracket 51 and a distal portion of the hinge pin 52 are disposed.

[0044] As described above, the lower end of the roller follower 53 comes into contact with the lower hole surface of the long hole 50 so that the weight of the knuckle 45 is supported by the cam plate 41. Further, since the roller follower 53 moves within the arc-shaped long hole 50 around the axis O2, the roller followers 42A, 42B roll on the cam surface 40 without fail.

[0045] A pair of right and left anti-rotation members 55 are provided between the pair of front and rear knuckles 45. Providing the anti-rotation members 55 can prevent the piston rods 17 from rotating around the vertical axis; in other words, the rotation of the electrodes 2A, 2B around the vertical axis can be prevented.

<Urging means 8>

[0046] The single side heating apparatus 1 according to the second embodiment also includes an urging means 8 configured to urge an electrode holder 5 toward the standby position. The urging means 8 according to the second embodiment is formed of a pair of right and left coil springs 56A, 56B. A side cover 57 is bolted to a right side surface and a left side surface of the knuckle 45 with bolts 58. One end of each coil spring 56A, 56B is attached to the side cover 57, while the other end thereof is inserted into a spring receiving hole 59 formed in each right side surface and left side surface of the cam plate 41.

[0047] The single side heating apparatus 1 according to the second embodiment is configured as described above, and as seen in FIG. 14, if the right end 70 of the electrode 2A, 2B receives a reaction force from the workpiece W1, the roller followers 42A, 42B roll on the cam surface 40 to move toward the left from a position shown in phantom lines to a position shown in solid lines against the urging force of the coil spring 56B (see FIG. 11), so that the electrode 2A, 2B rotate to tilt around the axis O2. Since the axis O2 is located at a center of the contact portion 4, almost no displacement occurs in the X-axis direction at the right end 70 and only a slight displacement in the Y-axis direction (upper-lower direction) occurs. Since the Y-axis direction is the same as a direction in which the electrode 2A, 2B is pressed against the workpiece W1, the contact portion 4 smoothly makes a linear contact with the workpiece W1 without the right end 70 getting stuck on the surface of the workpiece W1.

[0048] When the electrode 2A, 2B is moved away from the workpiece W1 after a predetermined heating, the roller followers 42A, 42B return to the original positions by the urging force of the coil springs 56A, 56B, and the electrode holder 5 returns to the standby position.

[0049] As described above, the single side heating apparatus 1 according to the second embodiment includes the base portion 3, the pair of electrodes 2A, 2B each having the contact portion 4, the electrode holders 5, cam mechanisms 9 each provided between the base portion 3 and the electrode holder 5 and configured to rotate to tilt the electrode holder 2A, 2B around the axis O2 passing through a center of the contact portion 4 and orthogonal to the direction in which the contact portion 4 extends, by a reaction force received by the electrode 2A, 2B from the workpiece W1. Further, each of the cam mechanisms 9 includes the cam plate 41 having the cam surface 40 formed of an arc-shaped surface extending around the axis O2, and the roller followers 42A, 42B configured to come into contact with the cam surface 40. According to the second embodiment, when one end of the contact portion 4 makes a point contact with the workpiece W1, the center of tilting movement of the electrode 2A, 2B is located at a center of the contact portion 4, so that the one end of the contact portion 4 displaces substantially in the upper-lower direction only. Therefore, the

contact portion 4 properly makes a linear contact with the workpiece W1 without the one end of the contact portion 4 getting stuck on the surface of the workpiece W1.

5 [0050] Further, use of the cam mechanisms 9 can provide a structure that is excellent in assembly.

[0051] Preferred embodiments of the present invention have been described above. In the above embodiments, the single side heating apparatus 1 includes two piston rods 17 to allow the electrodes 2A, 2B to move independently in the upper-lower direction. The single side heating apparatus 1 further includes a pair of four-bar linkages or a pair of cam mechanisms 9 corresponding to each of the electrodes 2A, 2B. However, the single side heating apparatus 1 may include only one four-bar linkage 7 or only one cam mechanism 9 to adjust the position of the electrodes 2A, 2B at the same time.

DESCRIPTION OF REFERENCE NUMERALS

[0052]

1	single side heating apparatus
2A, 2B	electrode
3	base portion
4	contact portion
5	electrode holder
7	four-bar linkage
8	urging means
9	cam mechanism
24A, 24B	link
40	cam surface
41	cam plate
42A, 42B	roller follower
W1, W2	workpiece

Claims

40 1. A single side heating apparatus equipped with a pair of electrodes (2A, 2B) for heating a workpiece (W1, W2) from one side of the workpiece (W1, W2), the apparatus comprising:

45 a base portion (3);
the pair of electrodes (2A, 2B) each having a contact portion (4) configured to contact with the workpiece (W1, W2) in one direction, the contact portion (4) having a single continuous contact surface or a plurality of spaced-apart contact surfaces; and an electrode holder (5), to which the pair of electrodes (2A, 2B) are fixed; **characterized in** a four-bar linkage (7) provided between the base portion (3) and the electrode holder (5) and configured to rotate to tilt the electrode holder (5) around an axis (O1) orthogonal to the one direction by a reaction force received by the electrodes (2A, 2B) from the workpiece

- (W1, W2),
 wherein the four-bar linkage (7) comprises a first link (33) located closer to the electrode holder (5), a second link (34) located closer to the base portion (3), a third link (35), and a fourth link (36), the first link (33) being shorter than the second link (34), and the third link (35) and the fourth link (36) being equal in length.
2. The single side heating apparatus according to claim 1, wherein the electrode holder (5) comprises a pair of electrode holders corresponding to the pair of electrodes (2A, 2B), and wherein the four-bar linkage (7) comprises a pair of four-bar linkages provided between the base portion (3) and the pair of electrode holders (5).
3. A single side heating apparatus equipped with a pair of electrodes (2A, 2B) for heating a workpiece (W1, W2) from one side of the workpiece (W1, W2), the apparatus comprising:
- a base portion (3);
 the pair of electrodes (2A, 2B) each having a contact portion configured to contact with the workpiece (W1, W2) in one direction, the contact portion having a single continuous contact surface or a plurality of spaced-apart contact surfaces;
 an electrode holder (5), to which the pair of electrodes (2A, 2B) are fixed; and a cam mechanism (9) provided between the base portion (3) and the electrode holder (5),
 wherein the cam mechanism (9) comprises a cam plate having a cam surface (40) formed of an arc-shaped surface extending around an axis (O2), and a roller follower (42A, 42B) configured to come into contact with the cam surface (40), wherein the cam mechanism (9) is configured to rotate to tilt the electrode holder (5) around the axis (O2) by a reaction force received by the electrodes (2A, 2B) from the workpiece (W1, W2), **characterized in that** the axis (O2) passes through a center of each of the contact portions (4) and orthogonal to the one direction.
4. The single side heating apparatus according to claim 3, wherein the electrode holder (5) comprises a pair of electrode holders corresponding to the pair of electrodes (2A, 2B), and wherein the cam mechanism (9) comprises a pair of cam mechanisms provided between the base portion (3) and the pair of electrode holders (5).
5. The single side heating apparatus according to any one of claims 1 to 4, further comprising an urging means (8) configured to urge the electrode holder (5) toward a standby position.

Patentansprüche

1. Einseitige Heizvorrichtung, die mit einem Paar Elektroden (2A, 2B) zum Erwärmen eines Werkstücks (W1, W2) von einer Seite des Werkstücks (W1, W2) ausgestattet ist, wobei die Vorrichtung umfasst:
- einen Basisabschnitt (3);
 das Paar Elektroden (2A, 2B), die jeweils einen Kontaktabschnitt (4) aufweisen, der dazu ausgelegt ist, mit dem Werkstück (W1, W2) in einer Richtung in Kontakt zu kommen, wobei der Kontaktabschnitt (4) eine einzige durchgängige Kontaktfläche oder eine Vielzahl voneinander beabstandeter Kontaktflächen aufweist; und
 einen Elektrodenhalter (5), an dem das Paar Elektroden (2A, 2B) befestigt ist;
gekennzeichnet durch
 ein Gelenkviereck (7), das zwischen dem Basisabschnitt (3) und dem Elektrodenhalter (5) vorgesehen ist und dazu ausgelegt ist, sich zu drehen, um den Elektrodenhalter (5) um eine Achse (O1) orthogonal zu der einen Richtung durch eine durch die Elektroden (2A, 2B) von dem Werkstück (W1, W2) aufgenommene Reaktionskraft zu kippen,
 wobei das Gelenkviereck (7) ein erstes Glied (33), das sich näher an dem Elektrodenhalter (5) befindet, ein zweites Glied (34), das sich näher an dem Basisabschnitt (3) befindet, ein drittes Glied (35) und ein viertes Glied (36) umfasst, wobei das erste Glied (33) kürzer als das zweite Glied (34) ist und das dritte Glied (35) und das vierte Glied (36) die gleiche Länge aufweisen.
2. Einseitige Heizvorrichtung nach Anspruch 1, wobei der Elektrodenhalter (5) ein Paar Elektrodenhalter umfasst, das dem Paar Elektroden (2A, 2B) entspricht, und wobei das Gelenkviereck (7) ein Paar Gelenkvierecke umfasst, das zwischen dem Basisabschnitt (3) und dem Paar Elektrodenhalter (5) vorgesehen ist.
3. Einseitige Heizvorrichtung, die mit einem Paar Elektroden (2A, 2B) zum Erwärmen eines Werkstücks (W1, W2) von einer Seite des Werkstücks (W1, W2) ausgestattet ist, wobei die Vorrichtung umfasst:
- einen Basisabschnitt (3);
 das Paar Elektroden (2A, 2B), die jeweils einen Kontaktabschnitt aufweisen, der dazu ausgelegt ist, mit dem Werkstück (W1, W2) in einer Richtung in Kontakt zu kommen, wobei der Kontaktabschnitt eine einzige durchgängige Kontaktfläche oder eine Vielzahl voneinander beabstandeter Kontaktflächen aufweist;
 einen Elektrodenhalter (5), an dem das Paar Elektroden (2A, 2B) befestigt ist; und

einen Nockenmechanismus (9), der zwischen dem Basisabschnitt (3) und dem Elektrodenhalter (5) vorgesehen ist,

wobei der Nockenmechanismus (9) eine Nockenscheibe mit einer Nockenfläche (40), die aus einer bogenförmigen Fläche gebildet ist, die sich um eine Achse (O2) erstreckt, und eine Stützrolle (42A, 42B), die dazu ausgelegt ist, mit der Nockenfläche (40) in Kontakt zu kommen, umfasst,

wobei der Nockenmechanismus (9) dazu ausgelegt ist, sich zu drehen, um den Elektrodenhalter (5) um die Achse (O2) durch eine durch die Elektroden (2A, 2B) von dem Werkstück (W1, W2) aufgenommene Reaktionskraft zu kippen,

dadurch gekennzeichnet, dass

die Achse (O2) durch einen Mittelpunkt jedes der Kontaktabschnitte (4) und orthogonal zu der einen Richtung verläuft.

4. Einseitige Heizvorrichtung nach Anspruch 3, wobei der Elektrodenhalter (5) ein Paar Elektrodenhalter umfasst, das dem Paar Elektroden (2A, 2B) entspricht, und wobei der Nockenmechanismus (9) ein Paar Nockenmechanismen umfasst, das zwischen dem Basisabschnitt (3) und dem Paar Elektrodenhalter (5) vorgesehen ist.
5. Einseitige Heizvorrichtung nach einem der Ansprüche 1 bis 4, ferner umfassend ein Druckmittel (8), das dazu ausgelegt ist, den Elektrodenhalter (5) in Richtung einer Bereitschaftsposition zu drücken.

Revendications

1. Dispositif de chauffage unilatéral équipé d'une paire d'électrodes (2A, 2B) destiné à chauffer une pièce à travailler (W1, W2) à partir d'un côté de la pièce à travailler (W1, W2), le dispositif comprenant :

une portion de base (3) ;

la paire d'électrodes (2A, 2B) ayant chacune une portion de contact (4) configurée pour entrer en contact avec la pièce à travailler (W1, W2) dans une direction, la portion de contact (4) ayant une surface de contact continue unique ou une pluralité de surfaces de contact espacées ; et un porte-électrode (5), auquel est fixée la paire d'électrodes (2A, 2B) ;

caractérisé par

un quadrilatère articulé (7) prévu entre la portion de base (3) et le porte-électrode (5) et configuré pour tourner afin d'incliner le porte-électrode (5) autour d'un axe (O1) orthogonal à l'une direction par une force de réaction reçue par les électrodes (2A, 2B) de la pièce à travailler (W1, W2),

dans lequel le quadrilatère articulé (7) comprend une première articulation (33) située plus près du porte-électrode (5), une deuxième articulation (34) située plus près de la portion de base (3), une troisième articulation (35), et une quatrième articulation (36), la première articulation (33) étant plus courte que la deuxième articulation (34), et la troisième articulation (35) et la quatrième articulation (36) étant de longueur égale.

2. Dispositif de chauffage unilatéral selon la revendication 1, dans lequel le porte-électrode (5) comprend une paire de porte-électrodes correspondant à la paire d'électrodes (2A, 2B), et dans lequel le quadrilatère articulé (7) comprend une paire de quadrilatères articulés prévue entre la portion de base (3) et la paire de porte-électrodes (5).

3. Dispositif de chauffage unilatéral équipé d'une paire d'électrodes (2A, 2B) destiné à chauffer une pièce à travailler (W1, W2) à partir d'un côté de la pièce à travailler (W1, W2), le dispositif comprenant :

une portion de base (3) ;

la paire d'électrodes (2A, 2B) ayant chacune une portion de contact configurée pour entrer en contact avec la pièce à travailler (W1, W2) dans une direction, la portion de contact ayant une surface de contact continue unique ou une pluralité de surfaces de contact espacées ; un porte-électrode (5), auquel est fixée la paire d'électrodes (2A, 2B) ; et

un mécanisme de came (9) prévu entre la portion de base (3) et le porte-électrode (5), dans lequel le mécanisme de came (9) comprend une plaque à came ayant une surface de came (40) formée d'une surface en forme d'arc s'étendant autour d'un axe (O2), et un galet suiveur (42A, 42B) configuré pour venir en contact avec la surface de came (40), dans lequel le mécanisme de came (9) est configuré pour tourner afin d'incliner le porte-électrode (5) autour de l'axe (O2) par une force de réaction reçue par les électrodes (2A, 2B) de la pièce à travailler (W1, W2),

caractérisé en ce que l'axe (O2) passe par un centre de chacune des portions de contact (4) et orthogonalement à l'une direction.

4. Dispositif de chauffage unilatéral selon la revendication 3, dans lequel le porte-électrode (5) comprend une paire de porte-électrodes correspondant à la paire d'électrodes (2A, 2B), et dans lequel le mécanisme de came (9) comprend une paire de mécanismes de came prévue entre la portion de base (3) et la paire de porte-électrodes (5).

5. Dispositif de chauffage unilatéral selon l'une quelconque des revendications 1 à 4, comprenant en outre un moyen de poussée (8) configuré pour pousser le porte-électrode (5) vers une position d'attente.

5

10

15

20

25

30

35

40

45

50

55

FIG. 1A

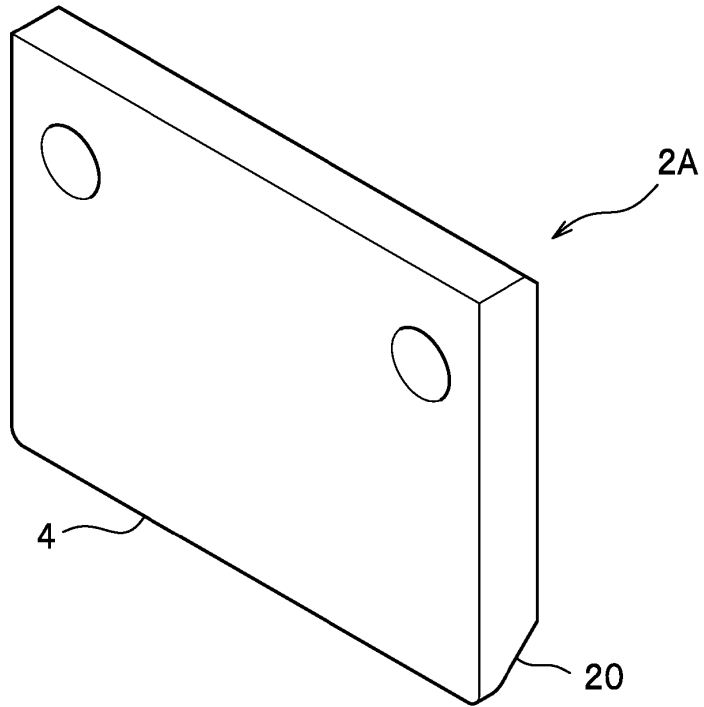


FIG. 1B

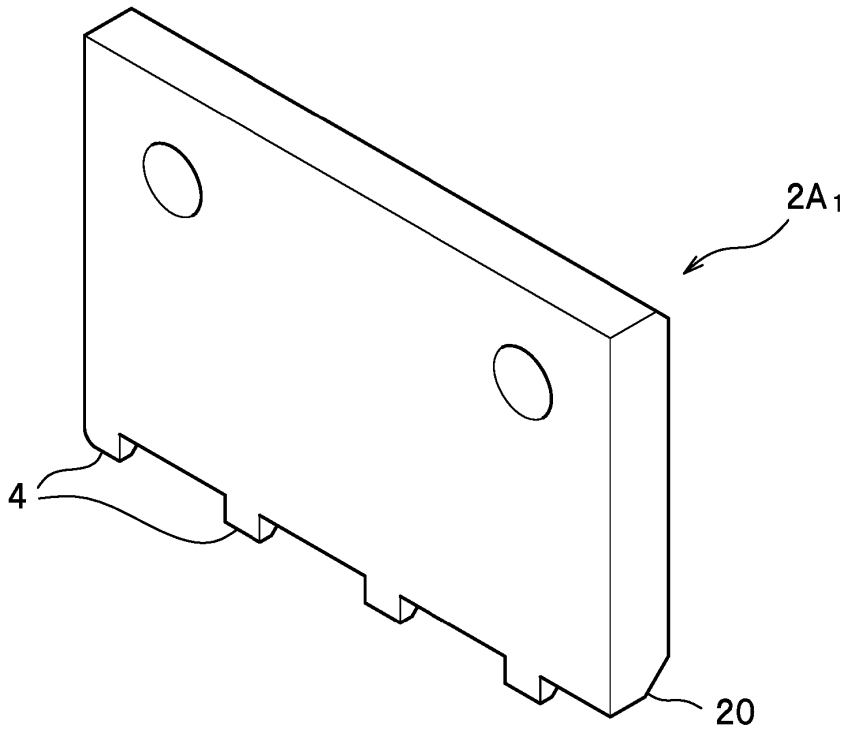


FIG. 2A

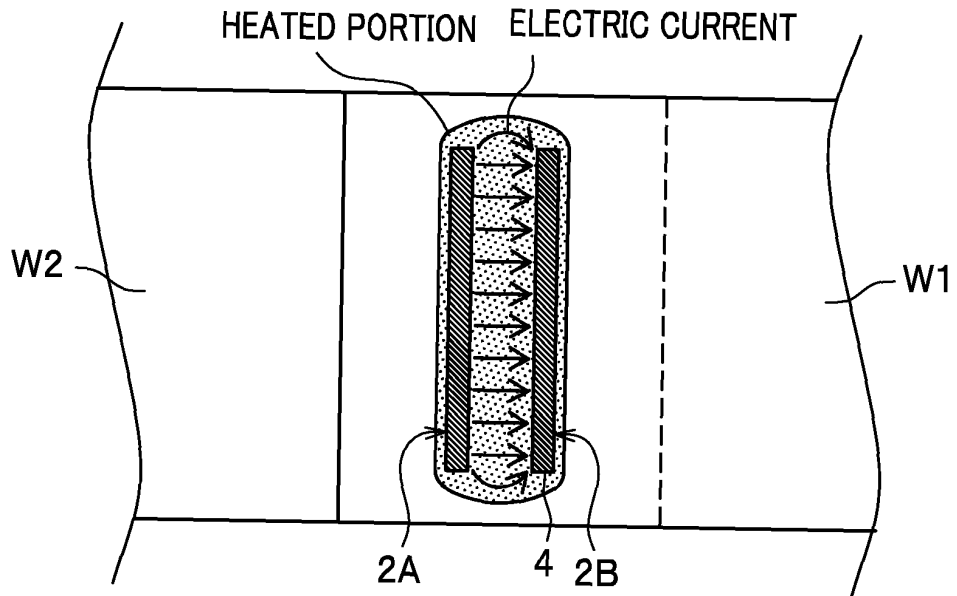


FIG. 2B

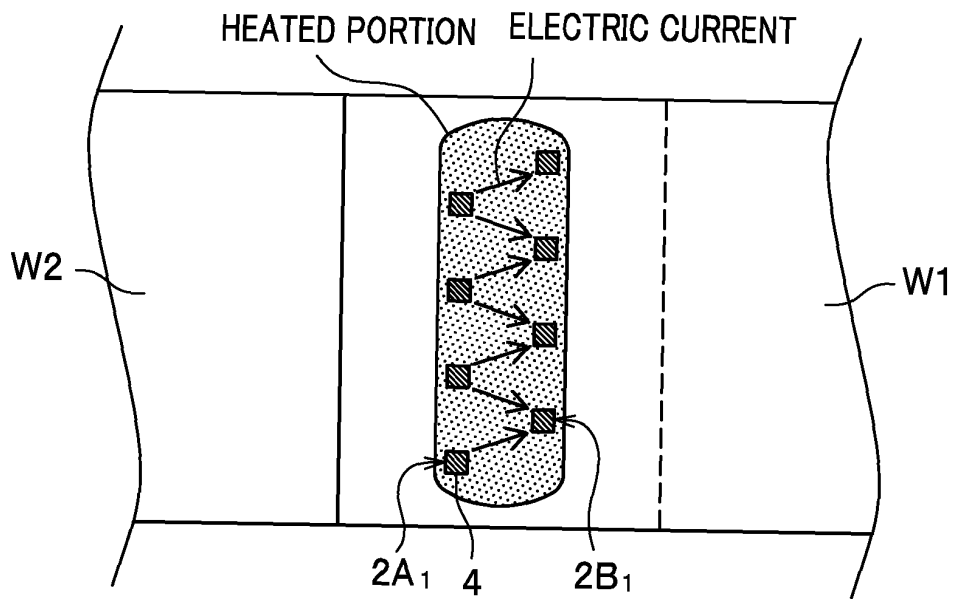


FIG. 3A

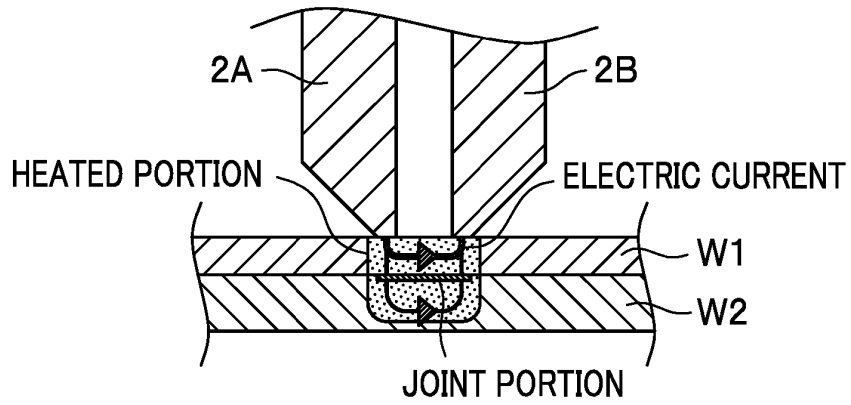


FIG. 3B

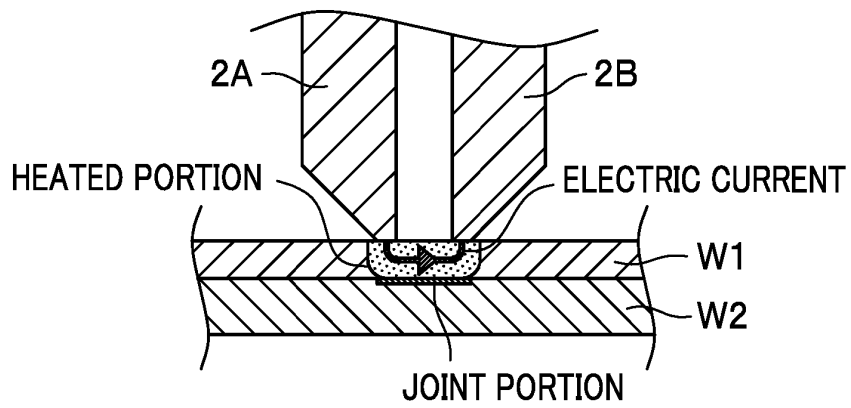


FIG. 3C

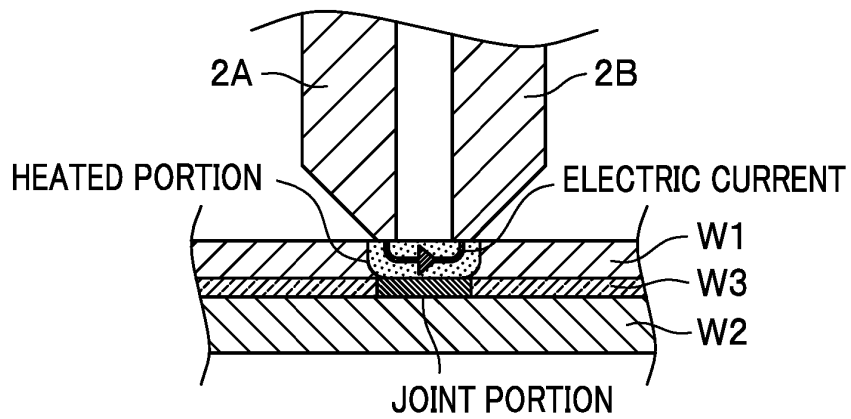


FIG. 4

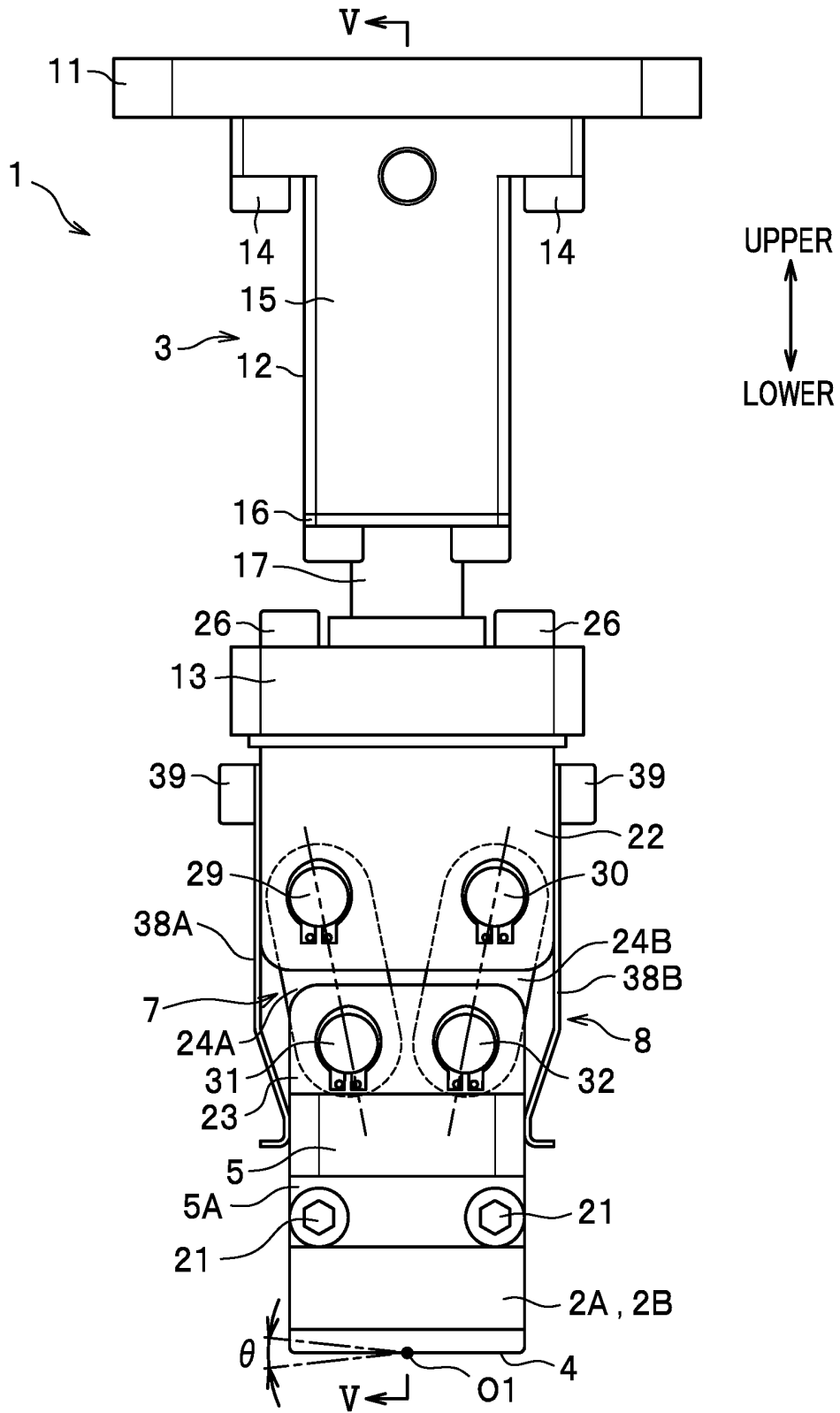


FIG. 5

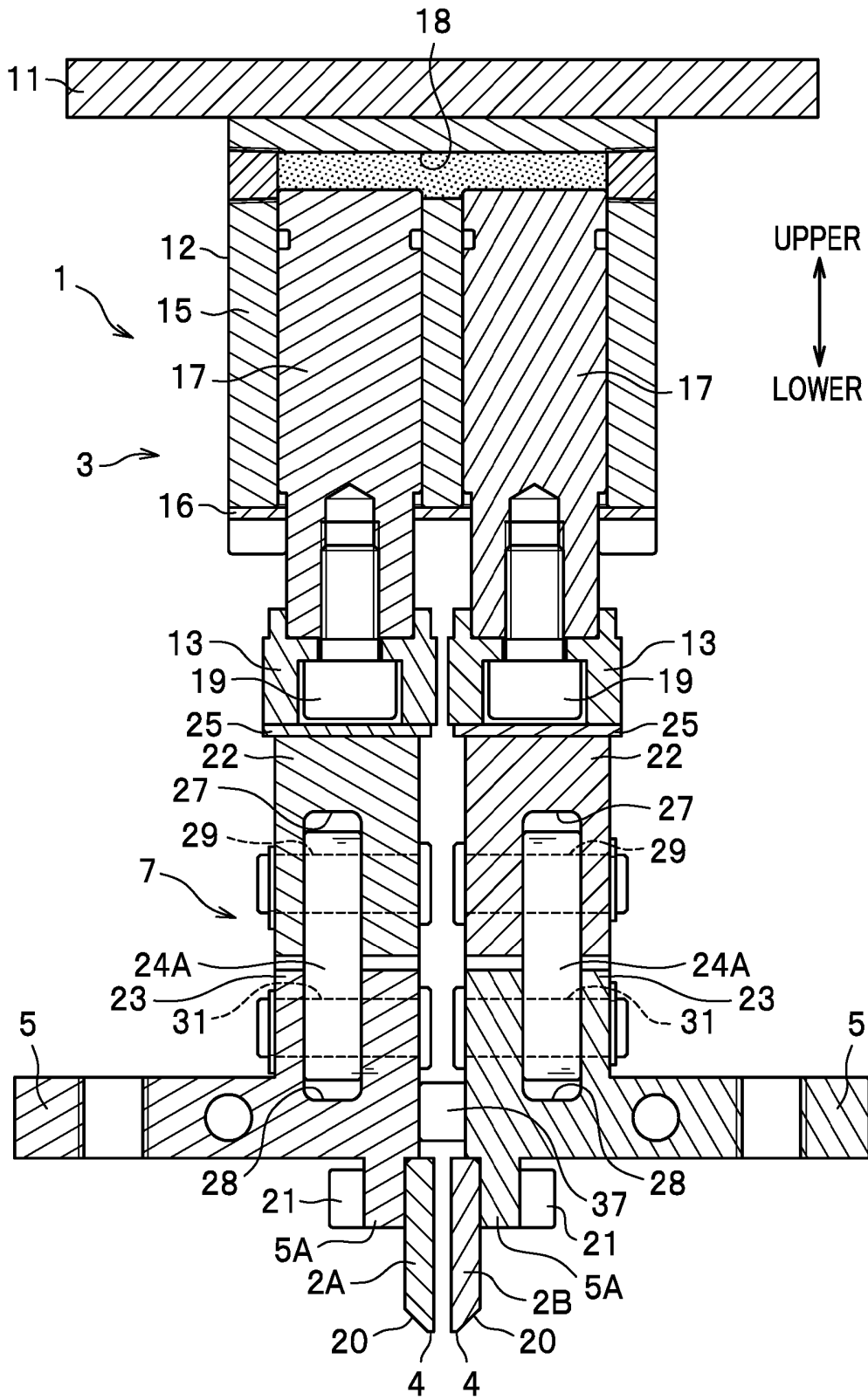


FIG. 6

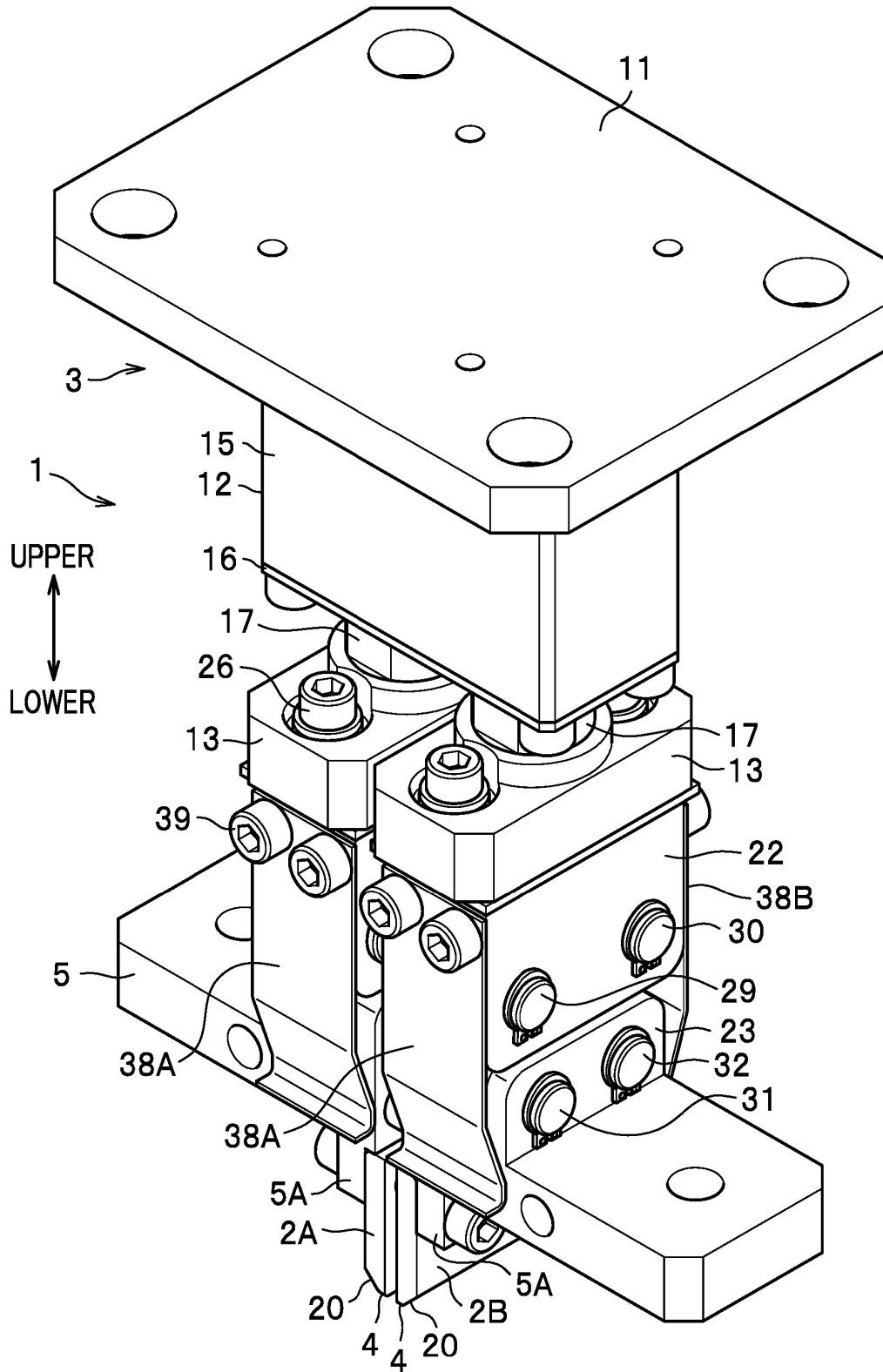


FIG. 7

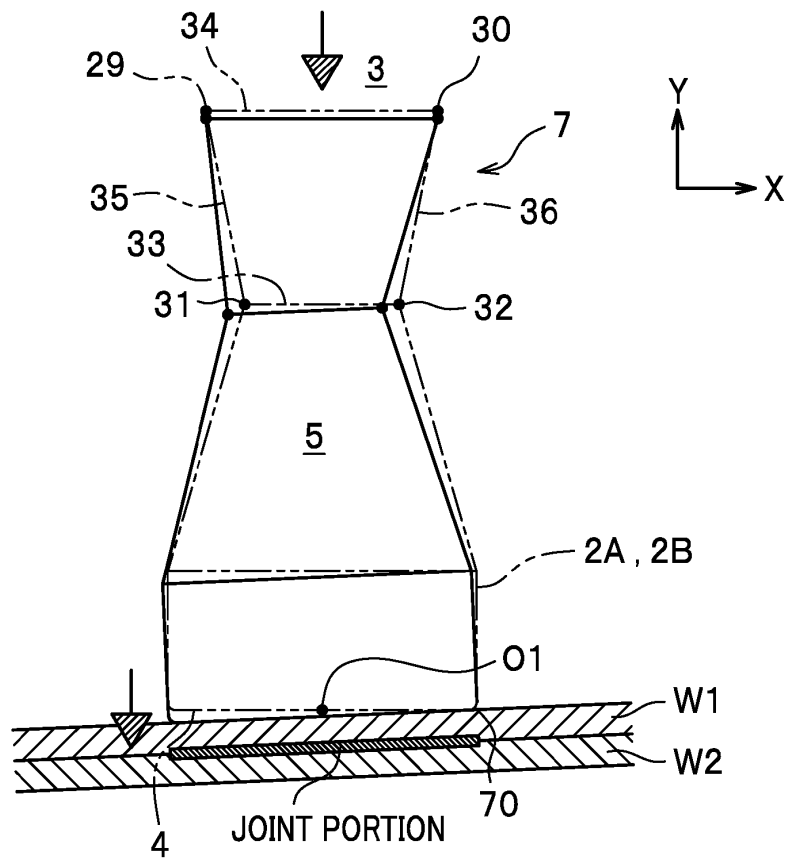


FIG. 8

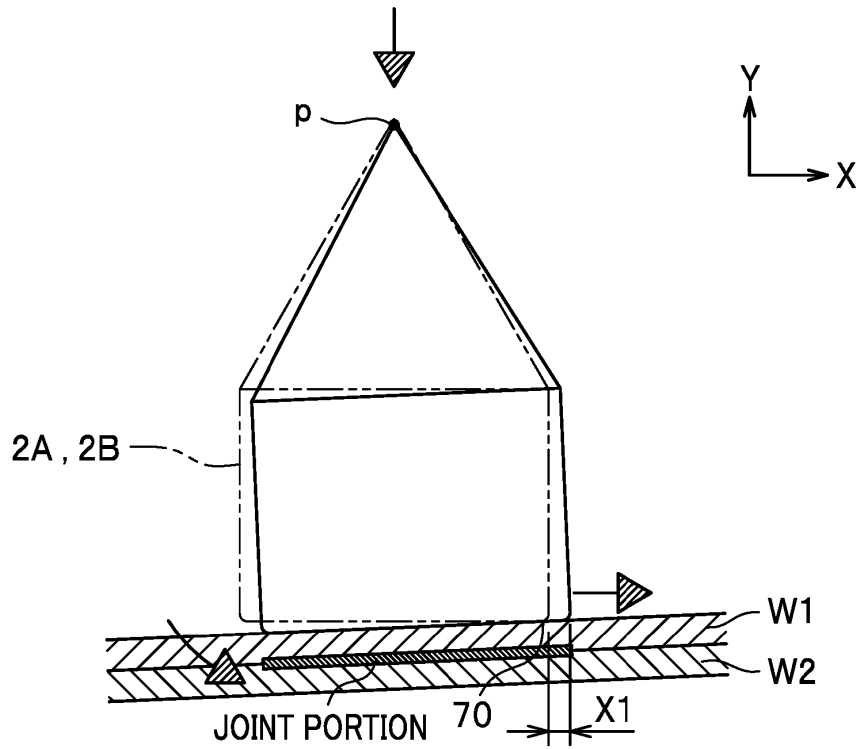


FIG. 9

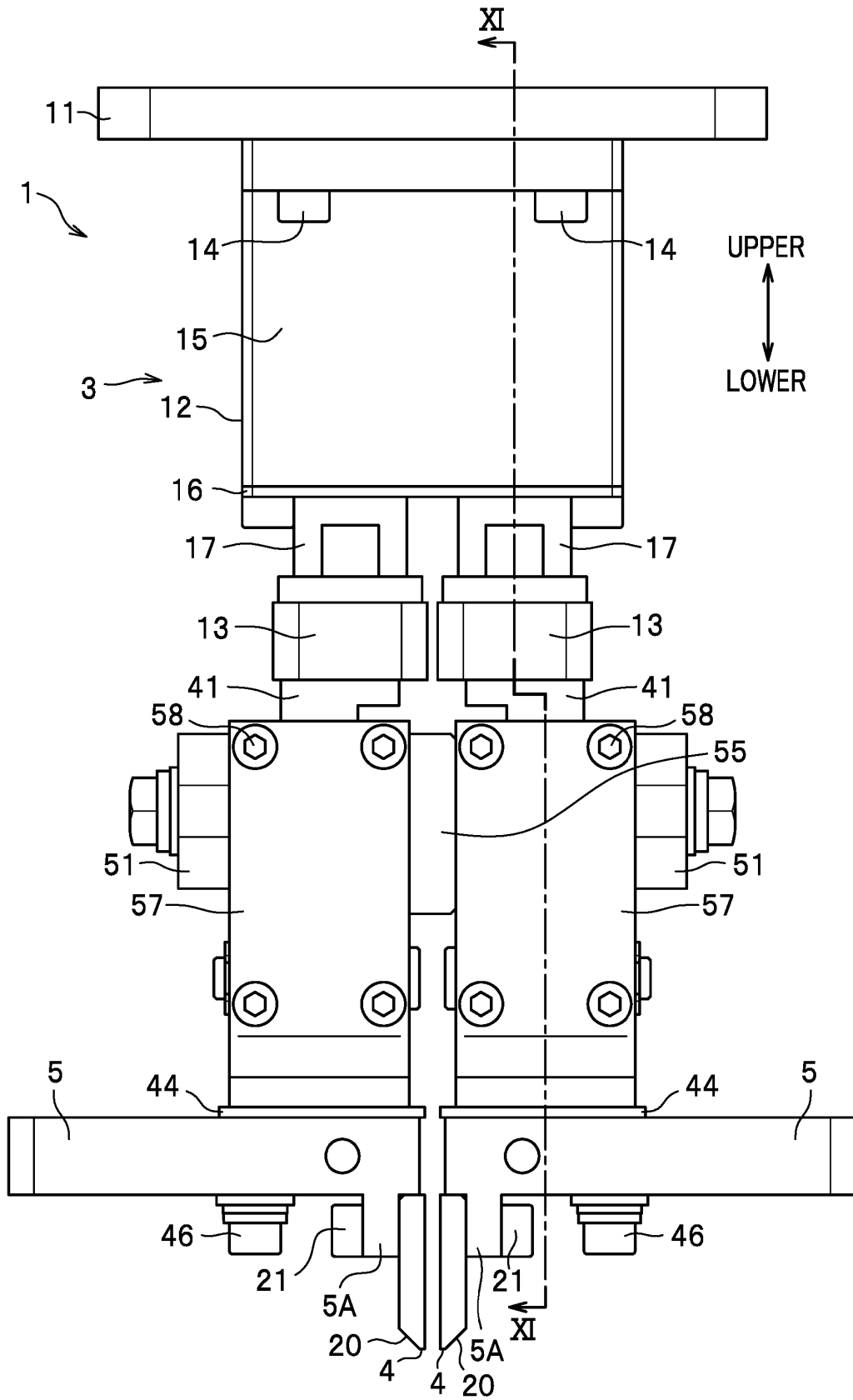


FIG. 10

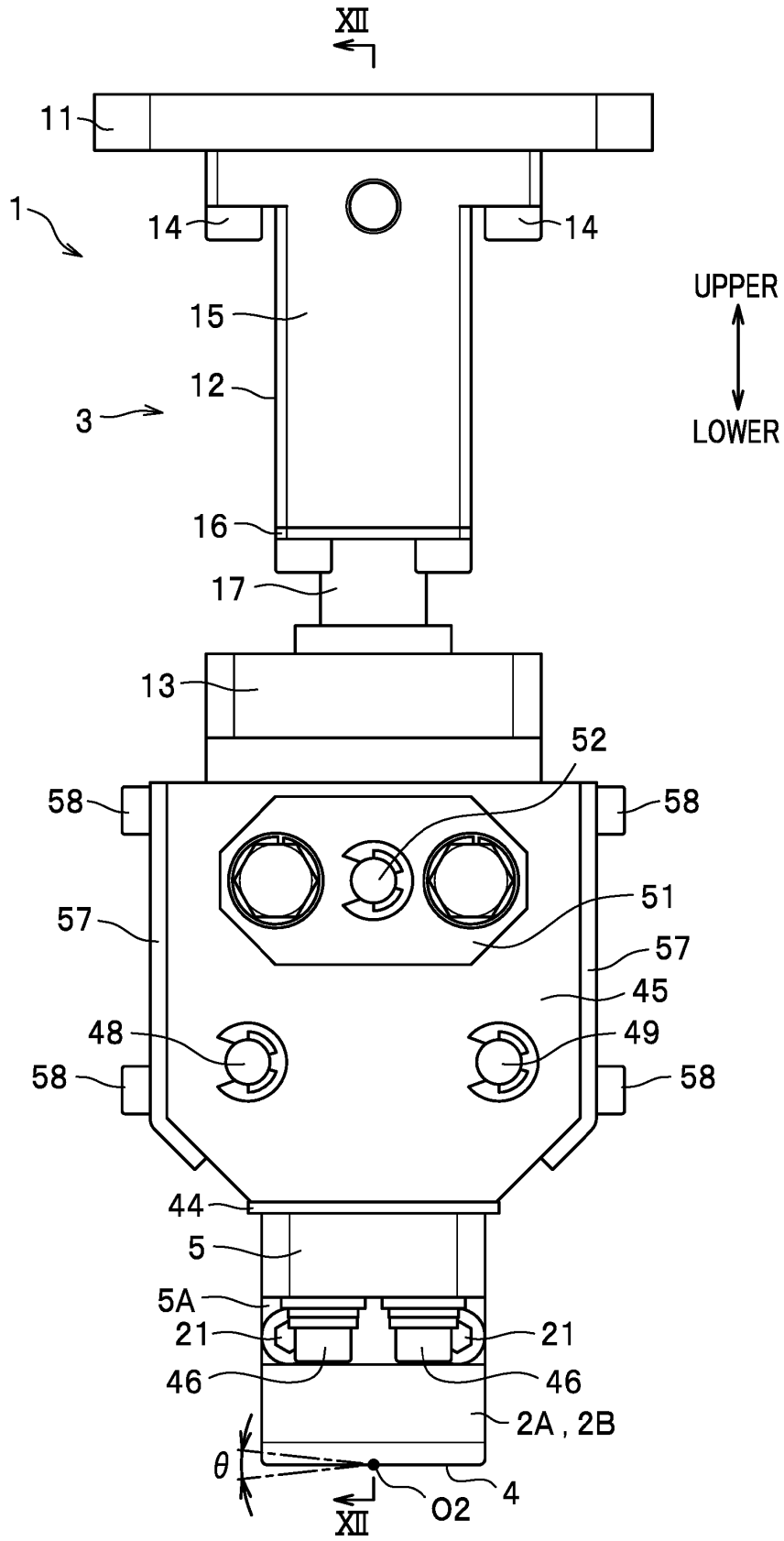


FIG. 11

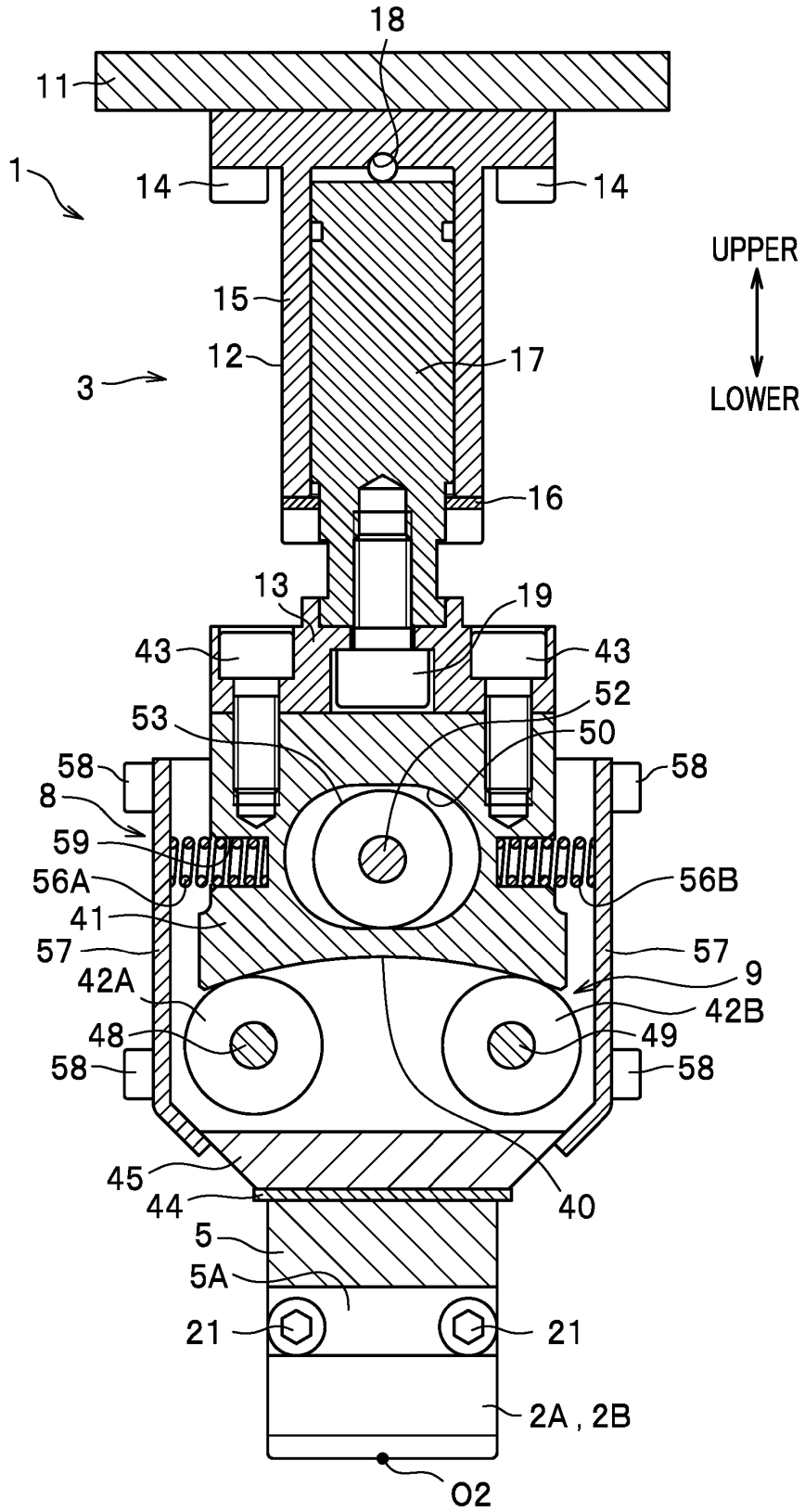


FIG. 12

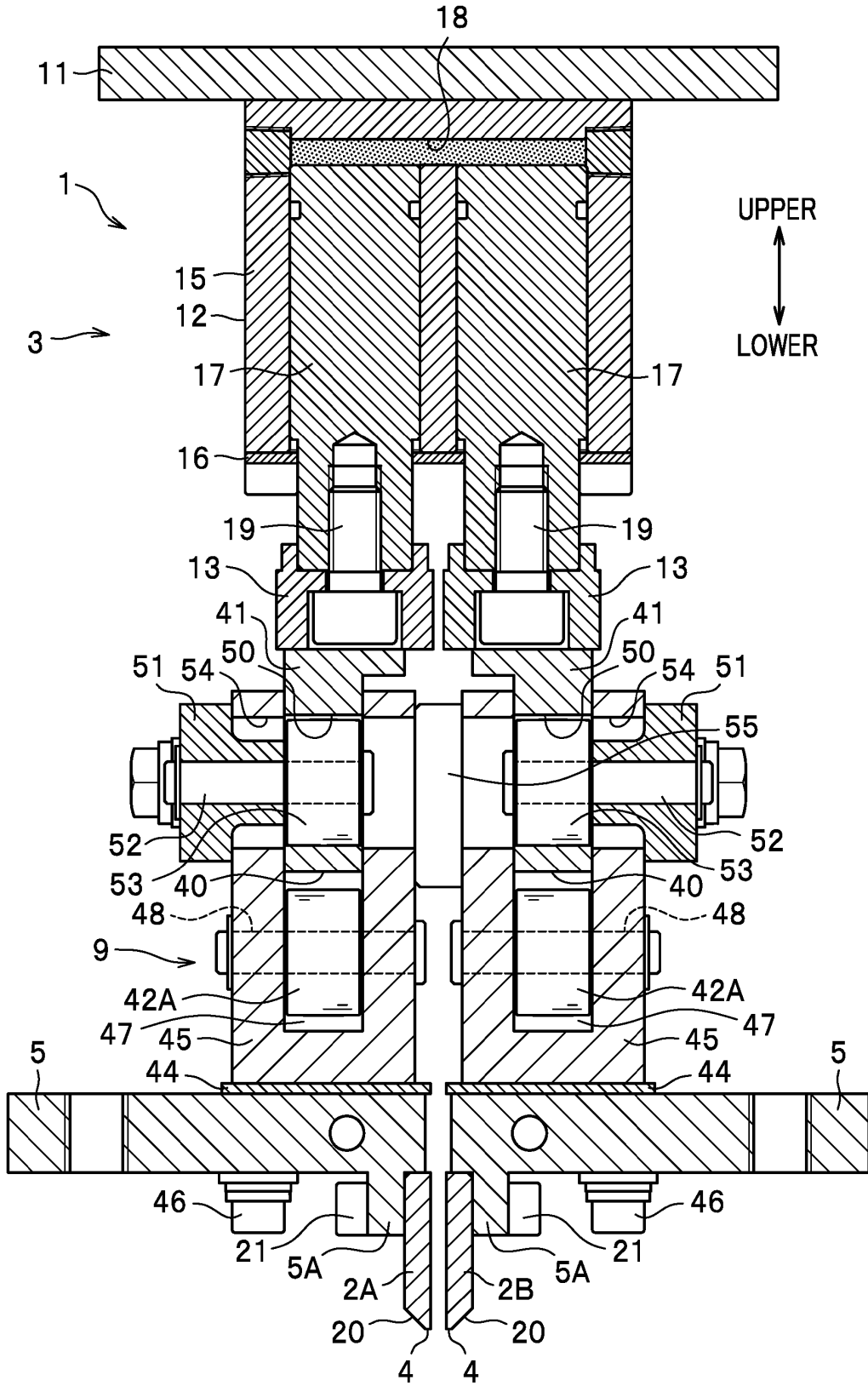


FIG. 13

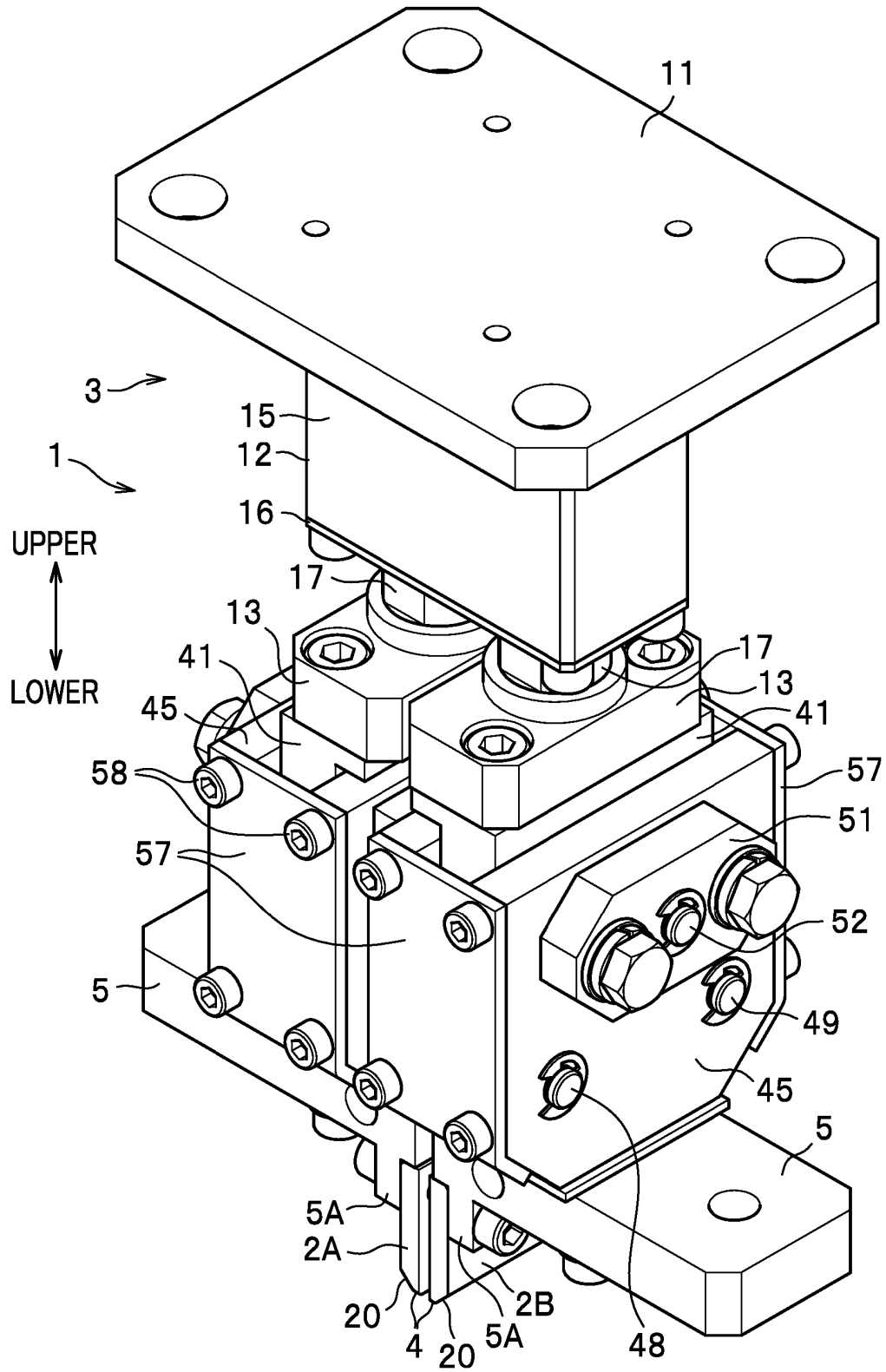
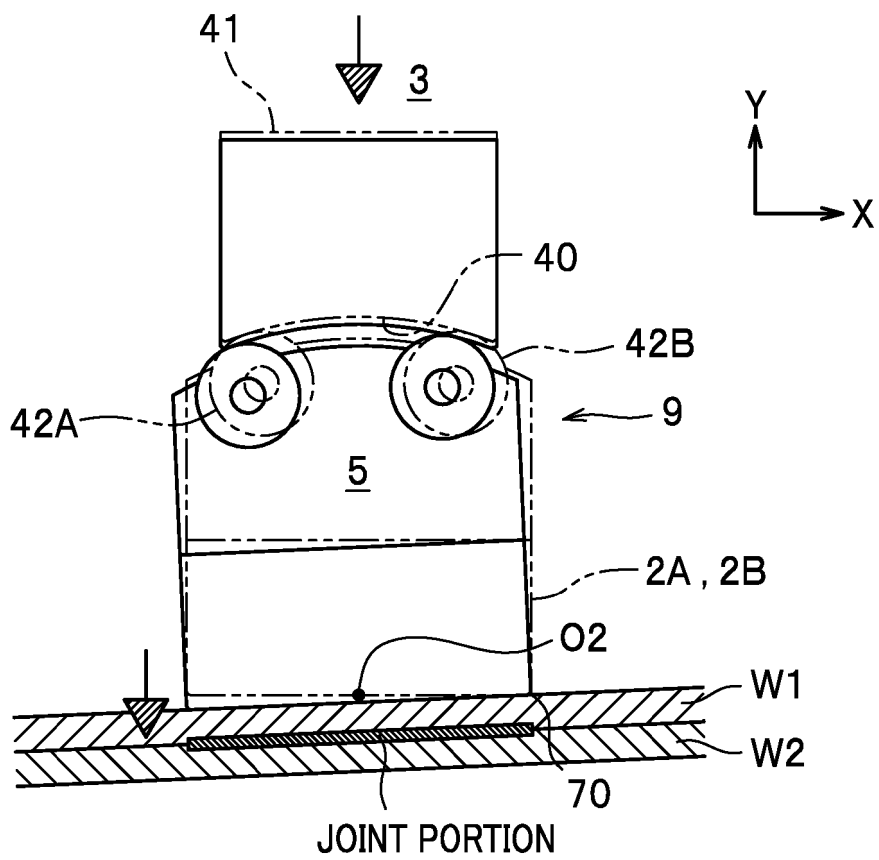


FIG. 14



REFERENCES CITED IN THE DESCRIPTION

This list of references cited by the applicant is for the reader's convenience only. It does not form part of the European patent document. Even though great care has been taken in compiling the references, errors or omissions cannot be excluded and the EPO disclaims all liability in this regard.

Patent documents cited in the description

- JP S62158577 A [0002] [0005]
- US 20150122782 A1 [0003]
- DE 2141177 A1 [0004]