



(11) **EP 3 315 654 B1**

(12) **EUROPEAN PATENT SPECIFICATION**

(45) Date of publication and mention of the grant of the patent:
11.09.2019 Bulletin 2019/37

(51) Int Cl.:
D06F 58/20^(2006.01) D06F 58/28^(2006.01)

(21) Application number: **17187005.8**

(22) Date of filing: **21.08.2017**

(54) **DRYER**

TROCKNER

APPAREIL DE SÉCHAGE

(84) Designated Contracting States:
AL AT BE BG CH CY CZ DE DK EE ES FI FR GB GR HR HU IE IS IT LI LT LU LV MC MK MT NL NO PL PT RO RS SE SI SK SM TR

(30) Priority: **31.10.2016 CN 201610929733**

(43) Date of publication of application:
02.05.2018 Bulletin 2018/18

(73) Proprietor: **Oriental System Technology Inc.**
Hsinchu 30075 (TW)

(72) Inventors:
• **HUANG, Chen-Tang**
Zhubei City
Hsinchu County 302 (TW)
• **WANG, Chein-Hsun**
Hsinchu City 300 (TW)

- **YU, Chein-Hsing**
Zhudong Township
Hsinchu County 310 (TW)
- **KU, Jenping**
Baoshan Township
Hsinchu County 308 (TW)
- **YANG, Ming-Tsung**
Beipu Township
Hsinchu County 314 (TW)

(74) Representative: **Reichert & Lindner**
Partnerschaft Patentanwälte
Bismarckplatz 8
93047 Regensburg (DE)

(56) References cited:
WO-A1-2007/057360 WO-A1-2014/154431
DE-A1-102014 218 254 JP-A- H07 178 293

EP 3 315 654 B1

Note: Within nine months of the publication of the mention of the grant of the European patent in the European Patent Bulletin, any person may give notice to the European Patent Office of opposition to that patent, in accordance with the Implementing Regulations. Notice of opposition shall not be deemed to have been filed until the opposition fee has been paid. (Art. 99(1) European Patent Convention).

Description

BACKGROUND OF THE INVENTION

1. FIELD OF THE INVENTION

[0001] The present invention relates to a dryer, and more particularly to a dryer having a function for detecting temperature.

2. DESCRIPTION OF THE PRIOR ART

[0002] Among the general household-consumed electricity, the consumed electricity of a dryer is only less than the consumed electricity of an air conditioning system, and the consumed electricity of the dryer is 2-4 times of that of a washing machine or double of that of an energy-saving refrigerator. Thus, reducing the consumed electricity of the dryer is a positive demand for saving household-consumed electricity. However, as to the traditional dryer, a drying time is mostly determined by the user according to own experience. If the drying time is up and the clothing is still not dried, then the user has to set the drying time again to have the clothing dried. It may be understood that the user will usually set a longer drying time to make sure that the clothing can be dried completely. As a result, the clothing may be dried excessively and energy may be wasted.

[0003] A traditional dryer has a resistive humidity sensor disposed within the cylinder. When the clothing is contacted with the resistive humidity sensor, the resistive humidity sensor can sense the humidity of the clothing, such that the controller can determine if the drying schedule has to be ended. However, the dryer adopting the resistive humidity sensor has the following shortcomings: (1) The resistive humidity sensor is apt to be polluted by the cotton, so that the resistive humidity sensor cannot be contact with the clothing completely. Thus, a wrong judgment that the clothing has been dried happens, and a false signal is output. As a result, the user needs to restart the drying schedule, and the extra energy consumption happens. (2) In order to avoid a false signal to be produced, the user often needs to clean the resistive humidity sensor, which causes inconvenience in use. (3) When the amount of the clothing is less, the clothing may not be contact with the resistive humidity sensor or be poor contact with the resistive humidity sensor, so that a false signal is output. (4) When the clothing of different properties (such as cotton/chemical fiber, small/large clothing or thick/thin clothing) is mixed and dried, the resistive humidity sensor cannot distinguish accurately whether all the clothing within the cylinder has been dried completely.

[0004] WO 2014/154431 A1 discloses a method for measuring thermal radiations in a rotating laundry drum and a machine configured for carrying out said method. Thermal radiations are measured in each case on the basis of a plurality of measuring points of a stationary

view of the rotating laundry drum by forming respective measuring values. By comparing the differences between the measured values with predetermined pattern values, with each sample value being assigned a typical loading, and the loading being determined equal to the typical loading of the most similar sample value.

[0005] JP 19950178293 A discloses a dryer which can detect dryness. A pyroelectric infrared sensor is installed in a cabinet, and an operation control means for controlling operation based on the output of the sensor.

[0006] WO 2007/057360 A discloses a dryer for drying, having a dryer housing where a drying compartment for holding the object, a heater for heating the drying compartment, an infrared-sensitive measuring element for contactlessly spectroscopically measuring the surface temperature of the object and for outputting a surface temperature signal, and a control arrangement having a first control device for receiving the surface temperature signal from the infrared-sensitive measuring element and a second control device for controlling or regulating the heater.

[0007] DE102014218254A1 discloses a condensation dryer and a method for operating such a condensation dryer. The condensation dryer has a drum for objects to be dried, a drive motor for the drum, a process air duct, a process air blower, a heating and cooling system for the Process air, a temperature sensor and a control device. In this case, the temperature sensor is an infrared telescope and for the simultaneous measurement of thermal radiation of at least two monitored components.

[0008] If it cannot be determined correctly that all the clothing has been dried completely, the user may abandon the automatic drying schedule and operate manually, which may consume more electricity. The above-mentioned shortcomings may not be overcome even by disposing a plurality of resistive humidity sensors. For this reason, the most important goal for now is to determine correctly that the clothing has been dried completely.

40 SUMMARY OF THE INVENTION

[0009] The present invention is directed to provide a dryer, which utilizes a thermopile array sensor to sense a temperature distribution uniformity and an average temperature of the clothing, and determines accordingly whether all the clothing has been dried completely, so as to control the dryer to automatically stop the drying schedule and achieve the goal of saving energy.

[0010] A dryer according to the present invention includes a cylinder, a heater, a motor, a temperature sensor and a controller, as defined in the independent claim 1. The cylinder is used to receive clothing and has an opening and an air outlet. The heater is used to heat air and deliver the heated air into the cylinder. The motor is connected to the cylinder to drive the cylinder to rotate. The temperature sensor includes a thermopile array sensor and a signal processor. The thermopile array sensor is used to sense an infrared light radiated from the clothing

and output a sensing signal. The signal processor is electrically connected to the thermopile array sensor to process the sensing signal to obtain a temperature distribution uniformity and an average temperature of the clothing, and output a control signal according to the temperature distribution uniformity and the average temperature of the clothing. The controller is electrically connected to the heater, the motor and the temperature sensor and determines to stop the heater and the motor according to the control signal.

[0011] The objective, technologies, features and advantages of the present invention will become apparent from the following description in conjunction with the accompanying drawings wherein certain embodiments of the present invention are set forth by way of illustration and example.

BRIEF DESCRIPTION OF THE DRAWINGS

[0012]

Fig. 1 is a diagram schematically illustrating a dryer of the first embodiment of the present invention.

Fig. 2 is a diagram schematically illustrating a temperature sensor of a dryer of one embodiment of the present invention.

Fig. 3 is a flow chart, schematically illustrating the steps of a dryer of one embodiment of the present invention for determining whether the clothing has been dried completely.

Fig. 4 is a diagram schematically illustrating a dryer of the second embodiment of the present invention.

Fig. 5 is a diagram schematically illustrating a dryer of the third embodiment of the present invention.

Fig. 6 is a diagram schematically illustrating a dryer of the fourth embodiment of the present invention.

Fig. 7 is a flow chart, schematically illustrating the steps of a dryer of another embodiment of the present invention for determining whether the clothing has been dried completely.

Fig. 8 is a diagram schematically illustrating a dryer of the fifth embodiment of the present invention.

Fig. 9 is a diagram schematically illustrating a dryer of the sixth embodiment of the present invention.

DESCRIPTION OF THE PREFERRED EMBODIMENT

[0013] Various embodiments of the present invention will be described in detail below and illustrated in conjunction with the accompanying drawings. In addition to

these detailed descriptions, the present invention can be widely implemented in other embodiments, and apparent alternations, modifications and equivalent changes of any mentioned embodiments are all included within the scope of the present invention and based on the scope of the Claims. In the descriptions of the specification, in order to make readers have a more complete understanding about the present invention, many specific details are provided; however, the present invention may be implemented without parts of or all the specific details. In addition, the well-known steps or elements are not described in detail, in order to avoid unnecessary limitations to the present invention. Same or similar elements in Figures will be indicated by same or similar reference numbers. It is noted that the Figures are schematic and may not represent the actual size or number of the elements. For clearness of the Figures, some details may not be fully depicted.

[0014] Referring to Fig. 1, a dryer of one embodiment of the present invention includes a cylinder 11, a heater 12, a motor 13, a temperature sensor 14 and a controller 15. The cylinder 11 has an opening 111 and an air outlet 112. The clothing that needs to be dried may be put into the cylinder 11 through the opening 111. The heater 12 may heat the input air AI, and the heated air HA may be delivered into the cylinder 11 to heat the clothing, such that the water in the clothing may be evaporated and the clothing may be dried. The air AO in the cylinder 11 that contains much moisture may be discharged through the air outlet 112 of the cylinder 11. It can be understood that those skilled in the art may know that disposing a drawing device may improve the efficiency of the air flow, which is not the main subject matter of the present invention and therefore, is not described here. The motor 13 is connected to the cylinder 11 to drive the cylinder 11 to rotate. When the cylinder 11 rotates, the cylinder 11 can tumble the clothing within the cylinder 11, such that all the clothing within the cylinder 11 may be heated evenly. It is needed to be explained that, in the embodiment depicted in Fig. 1, the heated air HA is delivered into the cylinder 11 through the opening 111, which is only a schematic description and cannot be used to limit the present invention.

[0015] Referring to Fig. 2 in conjunction, the temperature sensor 14 includes a thermopile array sensor 141 and a signal processor 142. The thermopile array sensor 141 may sense an infrared light radiated from the clothing within the cylinder 11 and output a sensing signal SS. The signal processor 142 is electrically connected to the thermopile array sensor 141. The signal processor 142 may process the sensing signal SS output by the thermopile array sensor 141 to obtain at least one of a temperature distribution uniformity and an average temperature of the clothing within the cylinder 11. The signal processor 142 may determine that whether the clothing within the cylinder 11 has been dried completely according to at least one of the temperature distribution uniformity and the average temperature of the clothing, and out-

put a control signal CS accordingly. The controller 15 is electrically connected to the heater 12, the motor 13 and the temperature sensor 14. The controller 15 may determine to stop the heater 12 and the motor 13, i.e., stop the drying schedule, or adjust the drying parameters, such as the wind speed or the drying temperature, etc. according to the control signal CS output by the temperature sensor 14.

[0016] For example, the thermopile array sensor 141 includes a thermopile array sensing element 141a and a thermistor 141b. The thermopile array sensing element 141a and the thermistor 141b output a sensing signal SS to the signal processor 142 respectively. The thermopile array sensing element 141a may be a two-dimensional array sensor, such as 8 x 8, 16 x 16 or 32 x 32 pixels, etc. The thermistor 141b may compensate for the thermopile array sensing element 141a to obtain a more accurate sensing result.

[0017] The signal processor 142 outputs a pixel selection signal PS to the thermopile array sensing element 141a, the thermopile array sensing element 141a outputs the sensing signal SS of the selected sensing pixel to a preamplifier 142a, and the sensing signal SS after amplified is input to a microcontroller 142b. A digital-analog converter built in the microcontroller 142b converts the sensing signal SS output by the thermopile array sensing element 141a into a digital signal. Likewise, the resistance of the thermistor 141b is also converted through the digital-analog converter built in the microcontroller 142b, so as to obtain the environment temperature. A non-volatile memory 142c may be used to store the parameter values of the thermopile array sensing element 141a and the thermistor 141b, which may be used to calculate the value of the measured temperature. A communication interface 142d may be used to output the control signal CS to the controller 15. For example, the communication interface 142d may be the I₂C, USB, UART, analog voltage output or logic 10 output. It can be understood that the non-volatile memory 142c and the communication interface 142d may be integrated into the microcontroller 142b, such as the microcontroller STM8L151G6U6.

[0018] According to the invention, the temperature sensor 14 further includes a lens 143 disposed at a receiving end of the **thermopile** array sensor 141. The lens 143 is used for the imaging of the thermopile array sensing element 141a. The focal length of the lens 143 and the size of the thermopile array sensing element 141a may determine a sensing angle of the thermopile array sensor 141 that is used to receive the infrared light. For example, the sensing angle of the thermopile array sensor 141 is less than or equal to 90 degrees. Preferably, the sensing angle of the thermopile array sensor 141 is between 45 and 90 degrees. It can be understood that a material of the lens 143 must be transmissible for the infrared light. For example, the material of the lens 143 may be silicon or germanium, which is transmissible for the infrared light having a wavelength of 1-12 μm. In one

embodiment, the lens 143 is a siliceous Fresnel lens.

[0019] In one embodiment, the temperature sensor 14 further includes a protective cover 144 disposed at the receiving end of the thermopile array sensor 141. For example, the thermopile array sensor 141 and the signal processor 142 are disposed within a housing 145, and the thermopile array sensor 141 receives the infrared light through a window of the housing 145. The protective cover 144 is disposed on the window of the housing 145 to protect the related elements of the temperature sensor 14. In one embodiment, a material of the protective cover 144 may be High Density Polyethylene (HDPE).

[0020] It can be understood that the temperature sensor 14 receives the infrared light radiated from the clothing within the cylinder 11 to measure the temperature information. Thus, the temperature sensor 14 does not need to be contact with the clothing within the cylinder 11. In other words, the disposing position of the temperature sensor 14 is more elastic, and a false signal due to poor contact with the clothing (such as cotton accumulation or less clothing) can be avoided. For example, the temperature sensor 14 is may be disposed at an inner side of the window at the opening 111 of the cylinder 11. In addition, the infrared light can transmit through cotton and not be shaded by cotton. Therefore, even if cotton is accumulated on the window, it can never affect the reception of the infrared light by the temperature sensor 14.

[0021] Referring to Fig. 3, a method for the dryer of the present invention to determine that whether the clothing has been dried completely is described. After the drying schedule starts, determine that whether the average temperature of the clothing within the cylinder 11 is more than or equal to a first temperature (S31), such as 40 degrees Celsius. If the average temperature has not reached 40 degrees Celsius, then repeat the step S31. When the average temperature has reached 40 degrees Celsius, it means that the clothing within the cylinder 11 has been preliminarily dried. Because a thickness of a sewing place of the clothing is thicker, especially for the jeans, the sewing place may not be dried easily. At this point, it is needed to determine that whether the temperature distribution uniformity of the clothing is less than or equal to a first set value (S32). For example, in the temperature distribution image, a temperature difference between a place having the highest temperature and a place having the lowest temperature should be less than a preset value, which means that the place having the lowest temperature is also starts to gradually heat up and approach the temperature of the place having the highest temperature or the drying temperature. If the temperature distribution uniformity is more than the first set value, then repeat the step S32. If the temperature distribution uniformity has reached the first set value, then determine that whether the average temperature of the clothing within the cylinder 11 is more than or equal to a second temperature (S33), such as 50 or 55 degrees Celsius. If not, then repeat the step S33. If the average temperature

of the clothing within the cylinder 11 has reached the second temperature, it means that the clothing has been dried completely, and at this point, the drying schedule may be ended, i.e., stop heating and rotating the cylinder 11. It should be noted that the above-mentioned method to determine that whether the clothing has been dried completely is only an example. Those skilled in the art may modify the above-mentioned steps to achieve the purpose of determining that whether the clothing has been dried completely. For example, determining that whether the clothing has been dried completely may be only based on the average temperature or the temperature distribution uniformity of the clothing.

[0022] Referring to Fig. 4, in one embodiment, the dryer of the present invention further includes a weight sensor 16 electrically connected to the controller 15. In the embodiment shown in Fig. 4, the weight sensor 16 is directly connected to the controller 15, but is not limited to this. The weight sensor 16 may be electrically connected to the temperature sensor 14 as well, and the sensing signal output by the weight sensor 16 may be output to the controller 15 via the temperature sensor 14. The weight sensor 16 may measure a weight of the clothing within the cylinder 11, and the controller may estimate a water content of the clothing according to the weight of the clothing. For example, the dryer of the present invention may integrate the washing function, i.e., include the water-washing, dehydrating and drying functions. At this point, before washing, the weight sensor 16 may measure a dry weight of the clothing. After the washing and dehydrating schedule, the weight sensor 16 may measure a wet weight of the clothing. The difference between the wet weight and the dry weight of the clothing is the more accurate water content of the clothing. Then, a more accurate drying time may be estimated according to the water content of the clothing and the drying ability of the dryer. It is needed to be explained that the water content of the clothing may be estimated only according to the wet weight of the clothing. For example, the bibulous rate of the clothing of different materials, i.e., the percentage of the water content of the cotton and chemical fiber clothing of unit weight after dehydration, may be obtained according to the experimental results. Based on the material proportion of the to-be-dried clothing set by the user before drying, such as 80% cotton and 20% chemical fiber or 50% for each, and based on the wet weight information of the clothing measured by the weight sensor 16, the water content of the to-be-dried clothing may be estimated roughly, so that the drying time for drying the clothing may also be estimated and used as a reference for the user.

[0023] Referring to Fig. 5, in one embodiment, the dryer of the present invention further includes a digital temperature and humidity sensor 17 disposed at the air outlet 112 of the cylinder 11 and electrically connected to the controller 15. The digital temperature and humidity sensor 17 may measure a temperature and a humidity of the discharged air AO. The controller 15 may calculate the

water content in unit volume according to the temperature and the humidity of the discharged air AO measured by the digital temperature and humidity sensor 17. Assume that the wind speed is constant, and the controller 15 may calculate the volume of the discharged air AO discharged in unit time and the water content thereof, i.e., a drying rate. Calculating the drying rate in real time may help to estimate a more accurate drying time. It can be understood that, referring to Fig. 6, in a preferred embodiment, the dryer of the present invention may include both the weight sensor 16 and the digital temperature and humidity sensor 17. The controller 15 may obtain the water content of the clothing and the real-time drying rate and calculate a very accurate drying time needed, so that the user may arrange her time efficiently according to the remaining drying time needed.

[0024] Referring to Fig. 7, another method for the dryer of the present invention to determine that whether the clothing has been dried completely is described. First, estimate the water content of the clothing according to the weight information measured by the weight sensor 16 (S71). Preferably, measure the dry weight and the wet weight of the clothing, so that a more accurate water content of the clothing may be obtained. Additionally, the increasing amount of the water content of the clothing may be used to determine the material of the clothing. For example, more cotton clothing contained may increase more water content. On the other hand, more chemical fiber clothing contained may increase less water content. Then, determine that whether the water content of the clothing is less than or equal to a second set value (S72). If not, then repeat the step S72. If the water content of the clothing is less than or equal to the second set value, determine that whether the cotton content of the clothing is more than or equal to a third set value (S73). If the cotton content of the clothing is more than or equal to the third set value, it means that more cotton clothing is contained, and thus, perform the step S74 to determine that whether the temperature distribution uniformity of the clothing is less than or equal to a first set value. If the temperature distribution uniformity of the clothing is not less than or equal to the first set value, then repeat the step S74. If the temperature distribution uniformity of the clothing is less than or equal to the first set value, then determine that whether the average temperature of the clothing is more than or equal to a second temperature (S75). If the average temperature of the clothing is not more than or equal to a second temperature, then repeat the step S75. If the average temperature of the clothing is more than or equal to the second temperature, it means that the clothing has been dried completely and the drying schedule may be ended.

[0025] Returning to the step S73, if the cotton content of the clothing is less than the third set value, it means that more chemical fiber clothing is contained, and then perform the step S76. Because the chemical fiber clothing may be dried more easily, determining that whether the average temperature of the clothing is more than or

equal to a third temperature may directly determine that whether the clothing has been dried completely. If the average temperature of the clothing is more than or equal to the third temperature, then the drying schedule may be ended. It should be noted that the determining steps shown in Fig. 7 may be added, deleted or modified, and the purpose of determining whether the clothing has been dried completely may be achieved without departing from the scope of the present invention.

[0026] Referring to Fig. 8, in one embodiment, the dryer of the present invention further includes a condenser 18 disposed at the air outlet 112 of the cylinder 11. The condenser 18 may condense the moisture WO in the discharged air AO and discharge it through a preset line altogether. As a result, the discharged air AO that contains a lot of moisture may be avoided to be directly discharged into the house, which may cause the house damp.

[0027] Referring to Fig. 9, in one embodiment, the dryer of the present invention further includes a heat exchanger 19 disposed at the air outlet 112 of the cylinder 11. The heat exchanger 19 may recycle the thermal energy of the discharged air AO for some appropriate applications. For example, the recycled thermal energy may be used to preheat air, and the preheated air PHA may be heated to a preset temperature with the heater 12 and delivered into the cylinder 11, so that the energy consumption of the heater 12 may be reduced. Or, the recycled thermal energy may also be applied to the warming air function of the air conditioning system.

[0028] To sum up the foregoing descriptions, the dryer of the present invention utilizes a thermopile array sensor to sense a temperature distribution uniformity and an average temperature of the clothing without contact with the clothing, and determines accordingly that whether all the clothing has been dried completely. Therefore, the dryer of the present invention may avoid a false signal due to the poor contact between the clothing and the sensor (such as cotton accumulation or less clothing). Moreover, even if cotton is accumulated on the sensing window, it can never affect the reception of the infrared light by the temperature sensor, and a precise measurement result can be obtained. Therefore, the dryer of the present invention may accurately determine that whether the clothing has been dried completely, so as to automatically stop the drying schedule and achieve the effect of saving energy.

Claims

1. A dryer comprising:

a cylinder (11) receiving clothing and having an opening (111) and an air outlet (112);
a heater (12) heating air and delivering the heated air into the cylinder (11); and
a motor (13) connected to the cylinder (11) to

drive the cylinder (11) to rotate;

characterized by

a temperature sensor (14) disposed at an inner side of a window at the opening (111) of the cylinder (11), comprising:

a thermopile array sensor (141) sensing an infrared light radiated from the clothing and outputting a sensing signal (SS);

a lens (143) disposed at a receiving end of the thermopile array sensor (141) to limit a sensing angle of the thermopile array sensor (141); and

a signal processor (142) electrically connected to the thermopile array sensor (141) to process the sensing signal (SS) to obtain a temperature distribution uniformity and an average temperature of the clothing, and output a control signal (CS) according to the temperature distribution uniformity and the average temperature of the clothing; and

a controller (15) electrically connected to the heater (12), the motor (13) and the temperature sensor (14) to determine to stop or adjust the heater (12) and the motor (13) according to the control signal (CS).

2. The dryer according to claim 1, wherein the sensing angle is less than or equal to 90 degrees.
3. The dryer according to claim 1, wherein a material of the lens (143) is silicon or germanium.
4. The dryer according to claim 1, wherein the lens (143) is a siliceous Fresnel lens.
5. The dryer according to claim 1, wherein the temperature sensor (14) comprises a protective cover (144) disposed at a receiving end of the thermopile array sensor (141), and the protective cover (144) is configured to protect the thermopile array sensor (141).
6. The dryer according to claim 5, wherein a material of the protective cover (144) is High Density Polyethylene (HDPE).
7. The dryer according to claim 1, wherein the thermopile array sensor (141) comprises a thermopile array sensing element (141a) and a thermistor (141b).
8. The dryer according to claim 1, further comprising: a weight sensor (16) electrically connected to the controller (15), wherein the weight sensor (16) is configured to measure a weight of the clothing, and the controller (15) is configured to estimate a water content of the clothing according to the weight of the clothing.

9. The dryer according to claim 8, further comprising: a digital temperature and humidity sensor (17) disposed at the air outlet (112) of the cylinder (11) to measure a temperature and a humidity of a discharged air (AO) through the air outlet (112) and electrically connected to the controller (15), wherein the controller (15) is configured to estimate a drying time according to the temperature and the humidity of a discharged air (AO) through the air outlet (112) and the water content of the clothing.
10. The dryer according to claim 1, further comprising: a digital temperature and humidity sensor (17) disposed at the air outlet (112) of the cylinder (11) to measure a temperature and a humidity of a discharged air (AO) through the air outlet (112) and electrically connected to the controller (15), wherein the controller (15) is configured to estimate a drying rate according to the temperature and the humidity of a discharged air (AO) through the air outlet (112).
11. The dryer according to claim 1, further comprising: a condenser (18) disposed at the air outlet (112) of the cylinder (11) to condense the moisture of a discharged air (AO) through the air outlet (112).
12. The dryer according to claim 1, further comprising: a heat exchanger (19) disposed at the air outlet (112) of the cylinder (11) to recycle a thermal energy of a discharged air (AO) through the air outlet (112).

Patentansprüche

1. Trockner, umfassend:
- einen Zylinder (11), der Kleidung aufnimmt und eine Öffnung (111) und einen Luftauslass (112) aufweist;
- eine Heizvorrichtung (12), die Luft erwärmt und die erwärmte Luft in den Zylinder (11) abgibt; und
- einen Motor (13), der mit dem Zylinder (11) zum Antreiben des Zylinders (11), sodass er sich dreht, verbunden ist;
- gekennzeichnet durch**
- einen Temperatursensor (14), der an einer Innenseite eines Fensters an der Öffnung (111) des Zylinders (11) angeordnet ist, umfassend:
- einen Thermosäulen-Array-Sensor (141), der ein Infrarotlicht erfasst, das von der Kleidung abgestrahlt wird, und ein Erfassungssignal (SS) ausgibt;
- eine Linse (143), die an einem Empfangsende des Thermosäulen-Array-Sensors (141) angeordnet ist, um einen Erfassungswinkel des Thermosäulen-Array-Sensors (141) zu begrenzen; und
- einen Signalprozessor (142), der mit dem Thermosäulen-Array-Sensor (141) elektrisch verbunden ist, um das Erfassungssignal (SS) zu verarbeiten, um eine Gleichmäßigkeit der Temperaturverteilung und eine Durchschnittstemperatur der Kleidung zu erhalten, und ein Steuersignal (CS) gemäß der Gleichmäßigkeit der Temperaturverteilung und der Durchschnittstemperatur der Kleidung auszugeben; und
- eine Steuerung (15), die mit der Heizvorrichtung (12), dem Motor (13) und dem Temperatursensor (14) elektrisch verbunden ist, um zu bestimmen, die Heizvorrichtung (12) und den Motor (13) gemäß dem Steuersignal (CS) zu stoppen oder einzustellen.
2. Trockner nach Anspruch 1, wobei der Erfassungswinkel kleiner oder gleich 90 Grad ist.
3. Trockner nach Anspruch 1, wobei ein Material der Linse (143) Silizium oder Germanium ist.
4. Trockner nach Anspruch 1, wobei die Linse (143) eine Fresnel-Linse aus Silizium ist.
5. Trockner nach Anspruch 1, wobei der Temperatursensor (14) eine Schutzabdeckung (144) umfasst, die an einem Empfangsende des Thermosäulen-Array-Sensors (141) angeordnet ist, und die Schutzabdeckung (144) dazu ausgelegt ist, den Thermosäulen-Array-Sensor (141) zu schützen.
6. Trockner nach Anspruch 5, wobei ein Material der Schutzabdeckung (144) hochdichtes Polyethylen (HDPE) ist.
7. Trockner nach Anspruch 1, wobei der Thermosäulen-Array-Sensor (141) ein Thermosäulen-Array-Erfassungselement (141a) und einen Thermistor (141b) umfasst.
8. Trockner nach Anspruch 1, ferner umfassend: einen Gewichtssensor (16), der mit der Steuerung (15) elektrisch verbunden ist, wobei der Gewichtssensor (16) dazu ausgelegt ist, ein Gewicht der Kleidung zu messen, und die Steuerung (15) dazu ausgelegt ist, einen Wassergehalt der Kleidung gemäß dem Gewicht der Kleidung zu schätzen.
9. Trockner nach Anspruch 8, ferner umfassend: einen digitalen Temperatur- und Feuchtigkeitssensor (17), der an dem Luftauslass (112) des Zylinders (11) angeordnet ist, um eine Temperatur und eine Feuchtigkeit einer durch den Luftauslass (112) ausgetragenen Luft (AO) zu messen, und mit der Steuerung (15) verbunden ist, um die Temperatur und die Feuchtigkeit der Kleidung zu messen, und die Steuerung (15) dazu ausgelegt ist, die Temperatur und die Feuchtigkeit der Kleidung zu steuern.

erung (15) elektrisch verbunden ist, wobei die Steuerung (15) dazu ausgelegt ist, eine Trocknungszeit gemäß der Temperatur und der Feuchtigkeit einer durch den Luftauslass (112) ausgetragenen Luft (AO) und dem Wassergehalt der Kleidung zu schätzen.

10. Trockner nach Anspruch 1, ferner umfassend: einen digitalen Temperatur- und Feuchtigkeitssensor (17), der an dem Luftauslass (112) des Zylinders (11) angeordnet ist, um eine Temperatur und eine Feuchtigkeit einer durch den Luftauslass (112) ausgetragenen Luft (AO) zu messen, und mit der Steuerung (15) elektrisch verbunden ist, wobei die Steuerung (15) dazu ausgelegt ist, eine Trocknungsgeschwindigkeit gemäß der Temperatur und der Feuchtigkeit einer durch den Luftauslass (112) ausgetragenen Luft (AO) zu schätzen.
11. Trockner nach Anspruch 1, ferner umfassend: einen Kondensator (18), der an dem Luftauslass (112) des Zylinders (11) angeordnet ist, um die Feuchtigkeit einer durch den Luftauslass (112) ausgetragenen Luft (AO) zu kondensieren.
12. Trockner nach Anspruch 1, ferner umfassend: einen Wärmetauscher (19), der an dem Luftauslass (112) des Zylinders (11) angeordnet ist, um eine Wärmeenergie einer durch den Luftauslass (112) ausgetragenen Luft (AO) zurückzugewinnen.

Revendications

1. Sécheuse comprenant :

un cylindre (11) recevant du linge et ayant une ouverture (111) et une sortie d'air (112) ;
un chauffage (12) chauffant de l'air et livrant l'air chauffé au cylindre (11) ; et
un moteur (13) raccordé au cylindre (11) pour entraîner le cylindre (11) en rotation;

caractérisée par

un capteur de température (14) disposé au niveau d'un côté interne d'une fenêtre au niveau de l'ouverture (111) du cylindre (11), comprenant :

un capteur à barrette de thermopiles (141) captant une lumière infrarouge rayonnée depuis le linge et fournissant en sortie un signal de captage (SS) ;
une lentille (143) disposée au niveau d'une extrémité réceptrice du capteur à barrette de thermopiles (141) pour limiter un angle de captage du capteur à barrette de thermopiles (141) ; et
un processeur de signal (142) électrique-

ment connecté au capteur à barrette de thermopiles (141) pour traiter le signal de captage (SS) afin d'obtenir une uniformité de répartition de température et une température moyenne du linge, et fournir en sortie un signal de commande (CS) selon l'uniformité de répartition de température et la température moyenne du linge ; et
une unité de commande (15) électriquement connectée au chauffage (12), au moteur (13) et au capteur de température (14) pour déterminer d'arrêter ou d'ajuster le chauffage (12) et le moteur (13) selon le signal de commande (CS).

2. Sécheuse selon la revendication 1, dans laquelle l'angle de captage est inférieur ou égal à 90 degrés.
3. Sécheuse selon la revendication 1, dans laquelle un matériau de la lentille (143) est le silicium ou le germanium.
4. Sécheuse selon la revendication 1, dans laquelle la lentille (143) est une lentille de Fresnel siliceuse.
5. Sécheuse selon la revendication 1, dans laquelle le capteur de température (14) comprend un couvercle protecteur (144) disposé au niveau d'une extrémité réceptrice du capteur à barrette de thermopiles (141), et le couvercle protecteur (144) est configuré pour protéger le capteur à barrette de thermopiles (141).
6. Sécheuse selon la revendication 5, dans laquelle un matériau du couvercle protecteur (144) est du polyéthylène haute densité (PEHD).
7. Sécheuse selon la revendication 1, dans laquelle le capteur à barrette de thermopiles (141) comprend un élément capteur à barrette de thermopiles (141a) et un thermistor (141b).
8. Sécheuse selon la revendication 1, comprenant en outre :
un capteur de poids (16) électriquement connecté à l'unité de commande (15), dans laquelle le capteur de poids (16) est configuré pour mesurer un poids du linge, et l'unité de commande (15) est configurée pour estimer une teneur en eau du linge selon le poids du linge.
9. Sécheuse selon la revendication 8, comprenant en outre :
un capteur numérique de température et d'humidité (17) disposé au niveau de la sortie d'air (112) du cylindre (11) pour mesurer une température et une humidité de l'air évacué (AO) à travers la sortie d'air (112) et électriquement connecté à l'unité de com-

mande (15), dans lequel l'unité de commande (15) est configurée pour estimer un temps de séchage selon la température et l'humidité d'un air évacué (AO) à travers la sortie d'air (112) et la teneur en eau du linge.

5

10. Sécheuse selon la revendication 1, comprenant en outre :

un capteur numérique de température et d'humidité (17) disposé au niveau de la sortie d'air (112) du cylindre (11) pour mesurer une température et une humidité d'un air évacué (AO) à travers la sortie d'air (112) et électriquement connecté à l'unité de commande (15), dans lequel l'unité de commande (15) est configurée pour estimer une cadence de séchage selon la température et l'humidité d'un air évacué (AO) à travers la sortie d'air (112).

10

15

11. Sécheuse selon la revendication 1, comprenant en outre :

un condenseur (18) disposé au niveau de la sortie d'air (112) du cylindre (11) pour condenser l'humidité d'un air évacué (AO) à travers la sortie d'air (112).

20

12. Sécheuse selon la revendication 1, comprenant en outre :

un échangeur de chaleur (19) disposé au niveau de la sortie d'air (112) du cylindre (11) pour recycler une énergie thermique d'un air évacué (AO) à travers la sortie d'air (112).

25

30

35

40

45

50

55

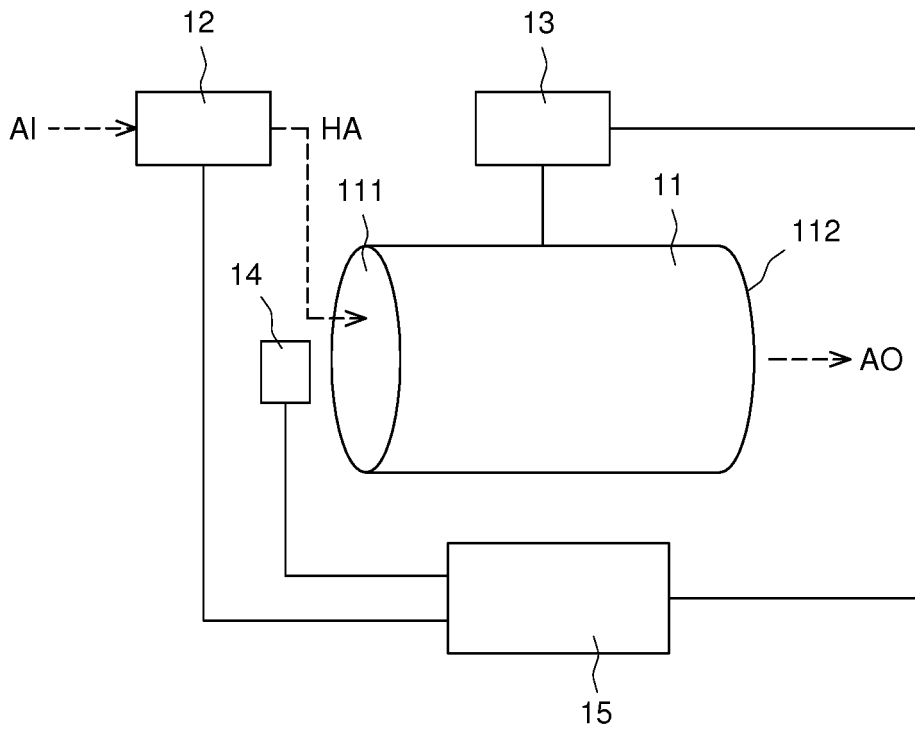


Fig. 1

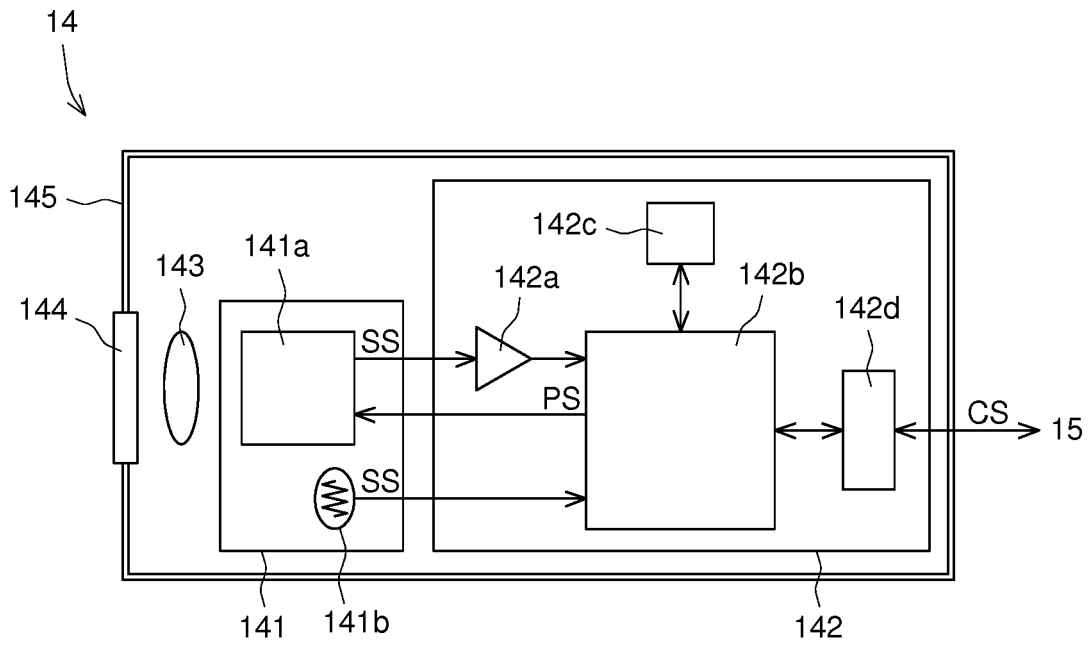


Fig. 2

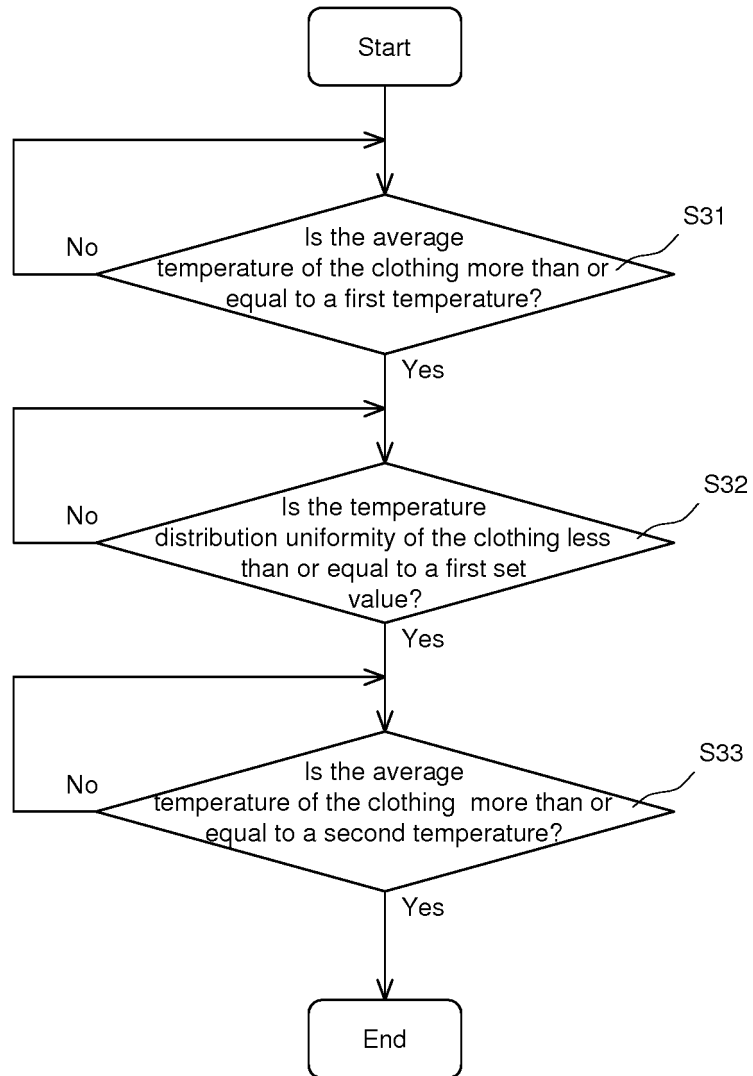


Fig. 3

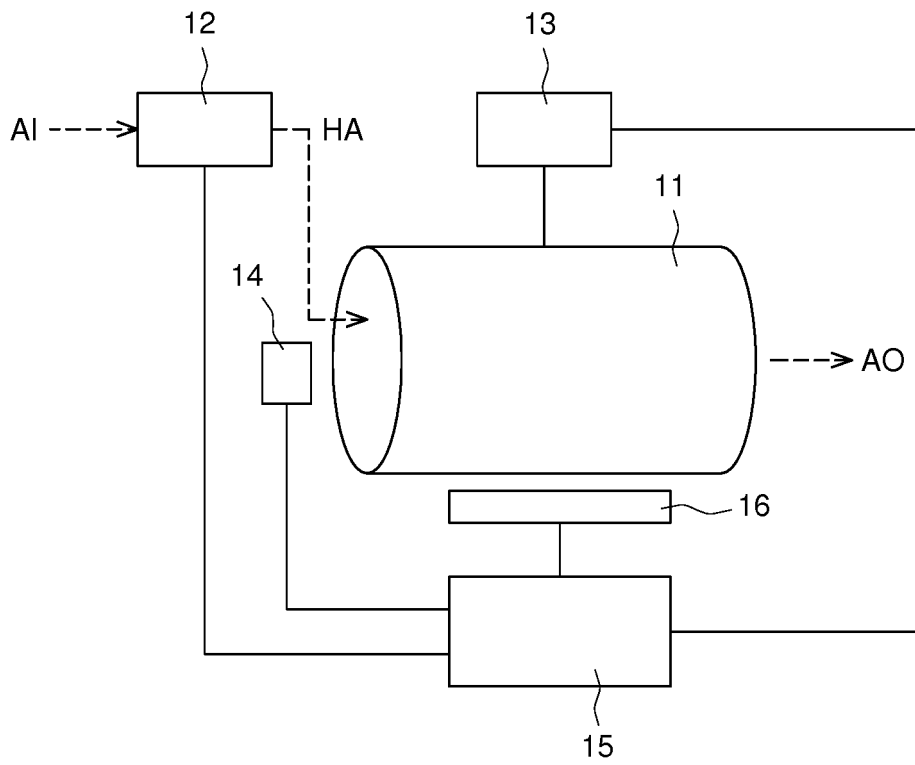


Fig. 4

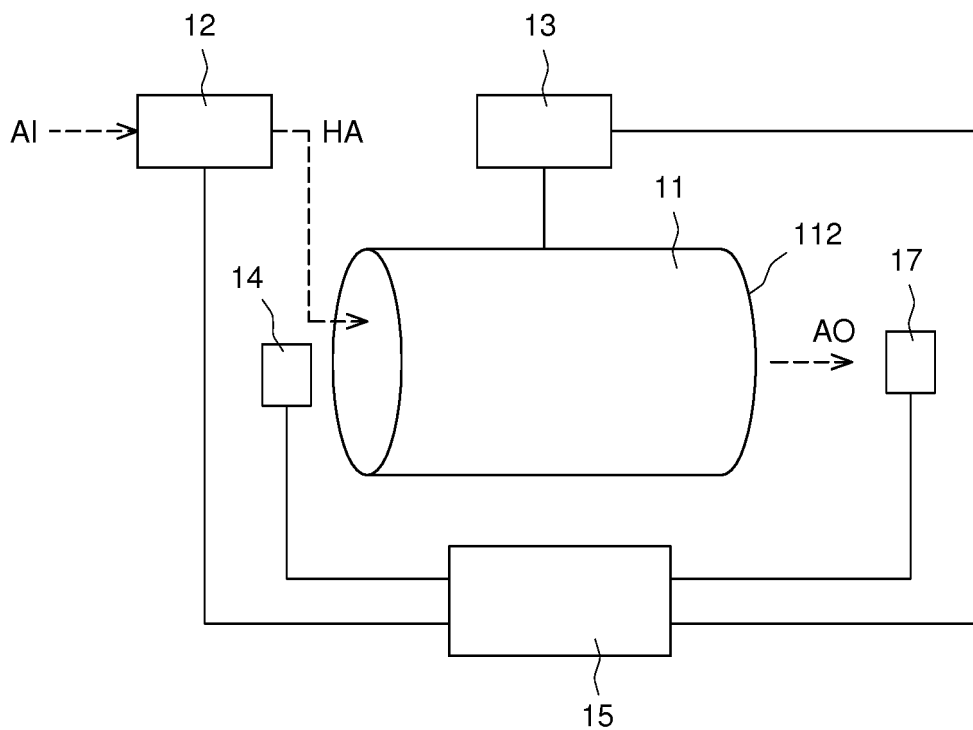


Fig. 5

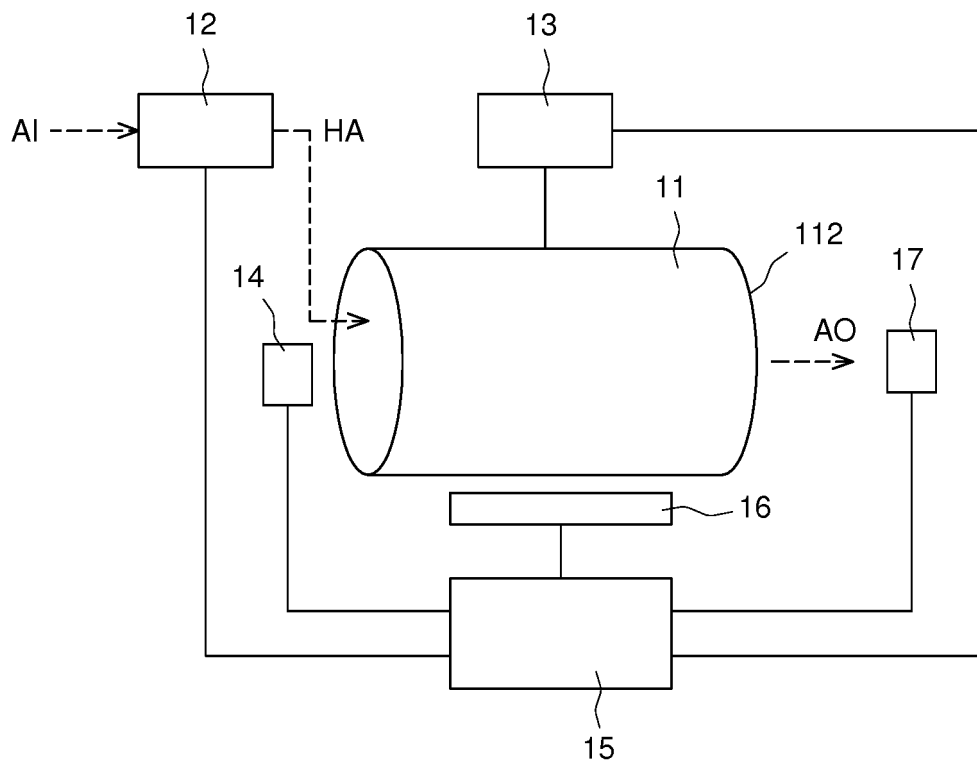


Fig. 6

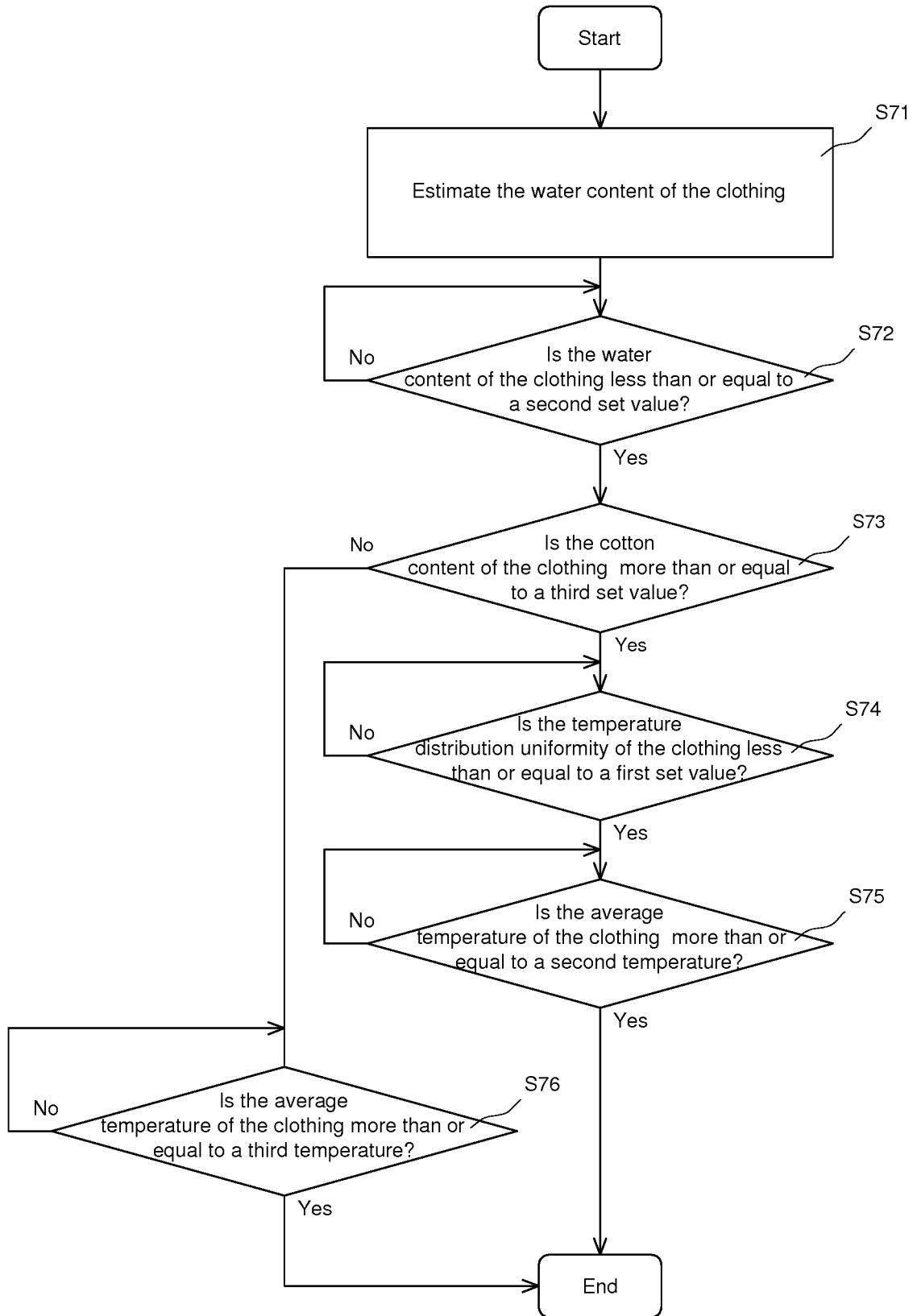


Fig. 7

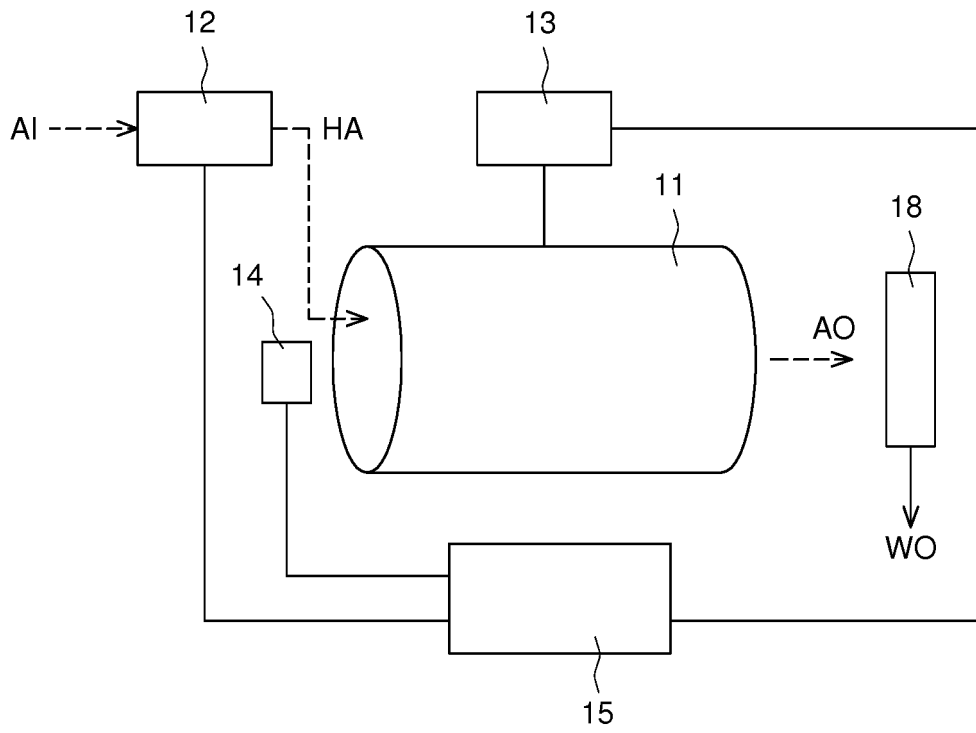


Fig. 8

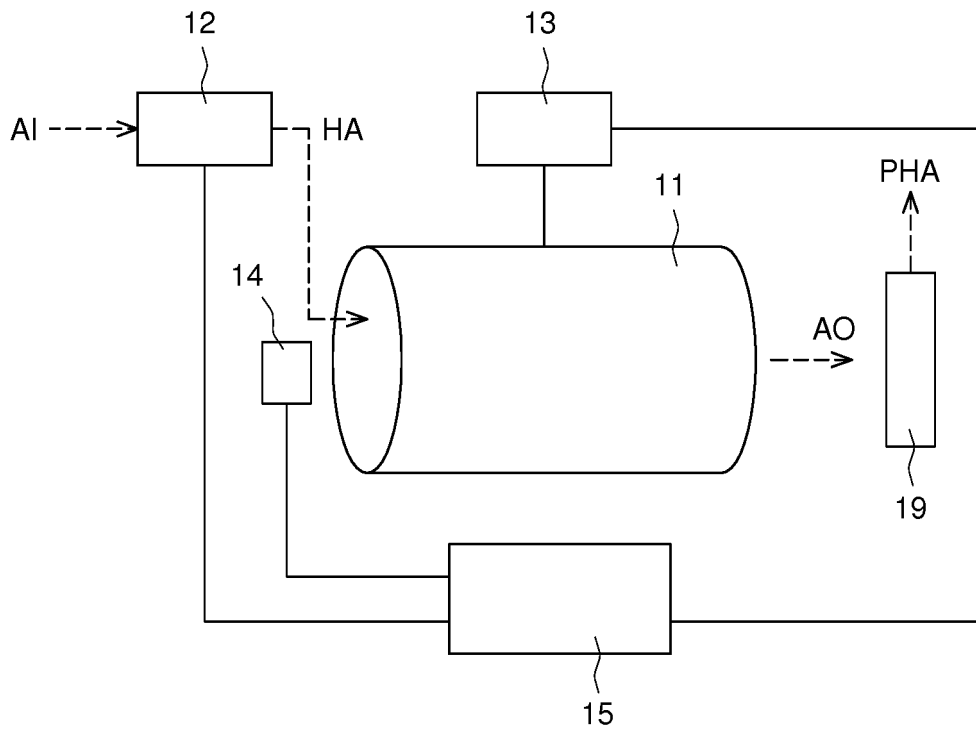


Fig. 9

REFERENCES CITED IN THE DESCRIPTION

This list of references cited by the applicant is for the reader's convenience only. It does not form part of the European patent document. Even though great care has been taken in compiling the references, errors or omissions cannot be excluded and the EPO disclaims all liability in this regard.

Patent documents cited in the description

- WO 2014154431 A1 [0004]
- JP 19950178293 A [0005]
- WO 2007057360 A [0006]
- DE 102014218254 A1 [0007]